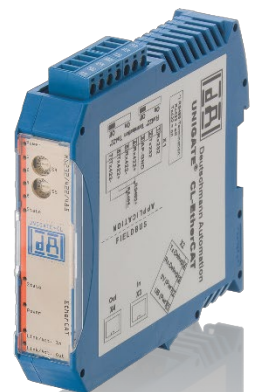


**Quick start EtherCAT TwinCAT V3 from BECKHOFF
with
Deuschmann UNIGATE® EtherCAT**

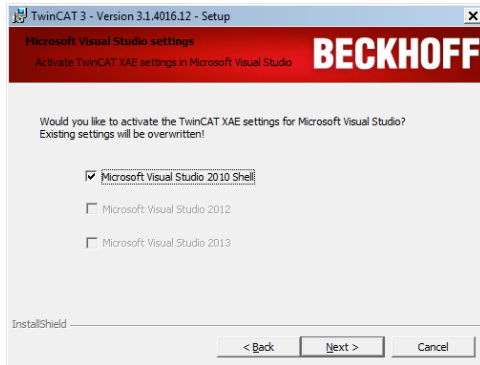


Inhalt

1. Download the software “TwinCAT 3.1 – Engineering” (XAE).....	3
2. XML file.....	3
3. Start TwinCAT V3:.....	3
4. Input and Output Modules.....	8
4.1 Input and Output Modules set in the XML file.....	8
4.2 Input and Output modules configured via EtherCAT Master.....	12

1. Download the software “TwinCAT 3.1 – Engineering” (XAE)

<http://www.beckhoff.com/english/download/tc3-download-xae.htm>

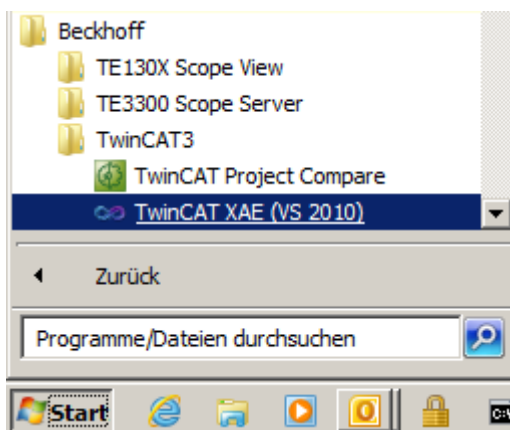


2. XML file

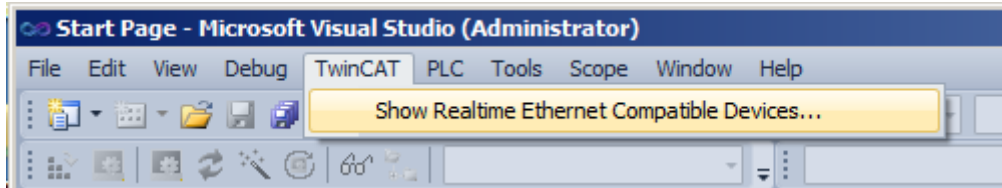
After installation, copy the XML file from Deutschmann into following folder:

C:\TwinCAT\3.1\Config\Io\EtherCAT

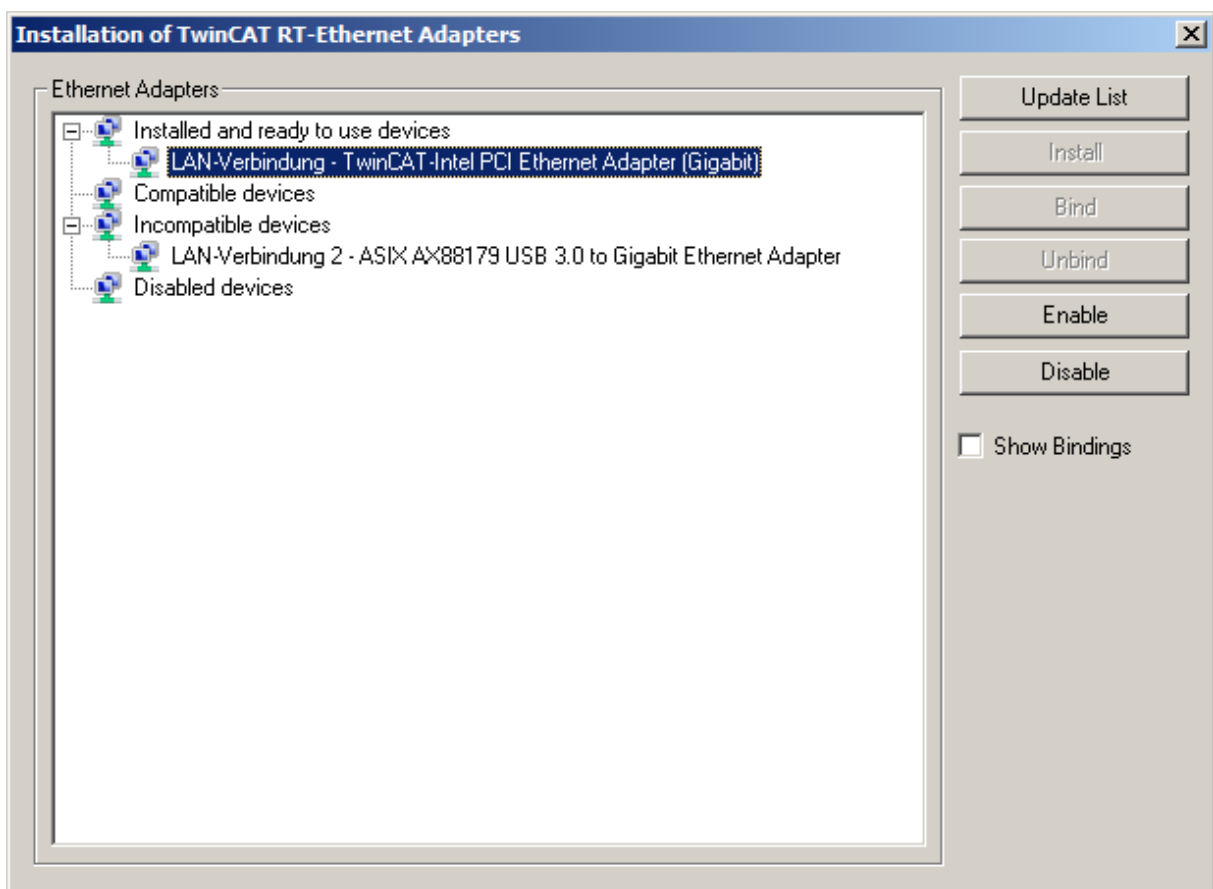
3. Start TwinCAT V3:



Check if your Ethernet Card is working with the software

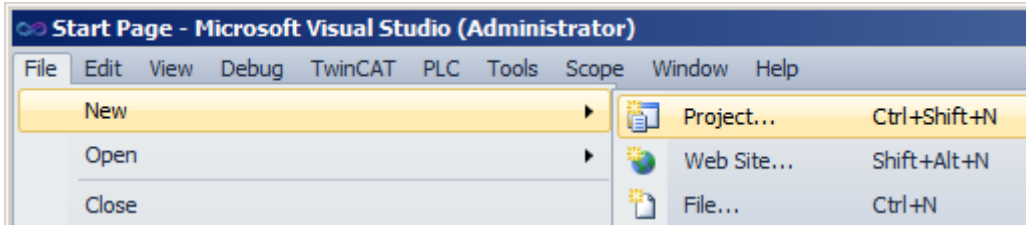


If there is a device shown in the subfolder „Installed and ready to use devices“, then you can go on.

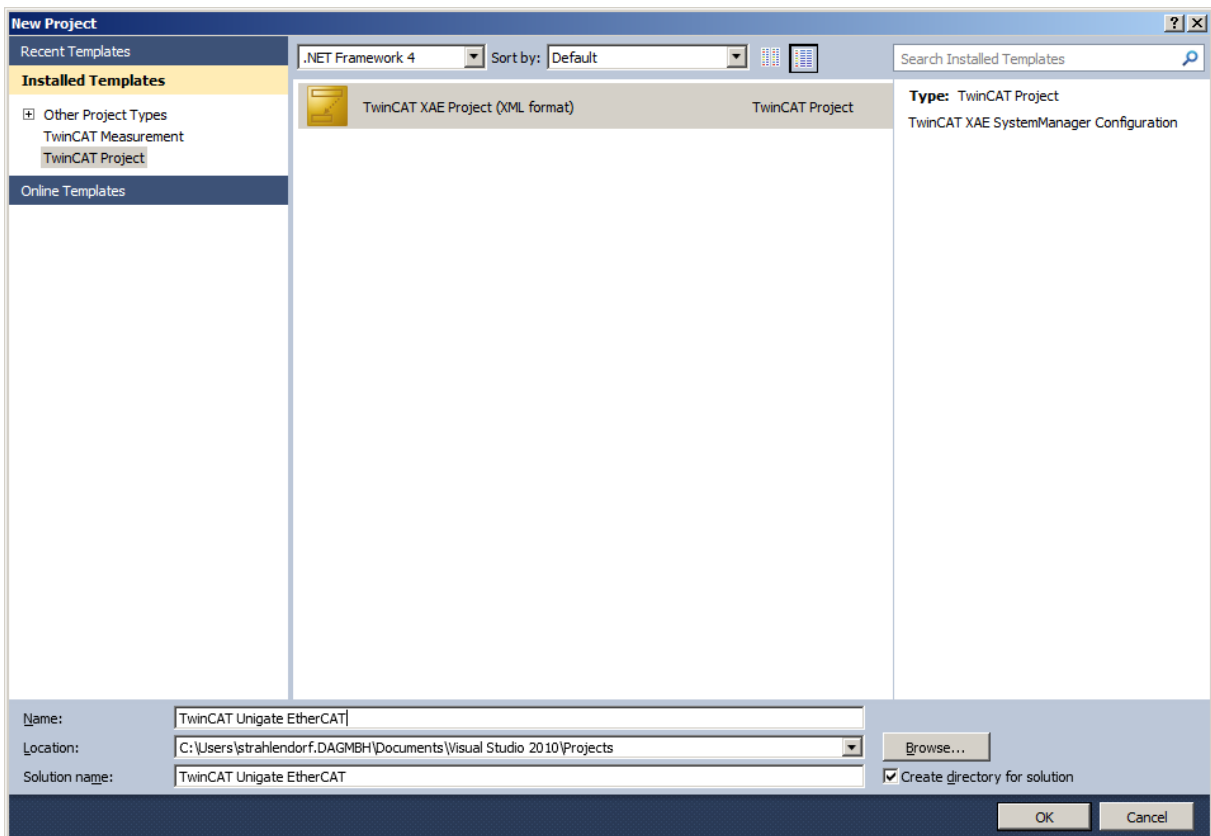



Start UNIGATE® with Script example from ProtocolDeveloper folder “Templates – EtherCAT.dss”

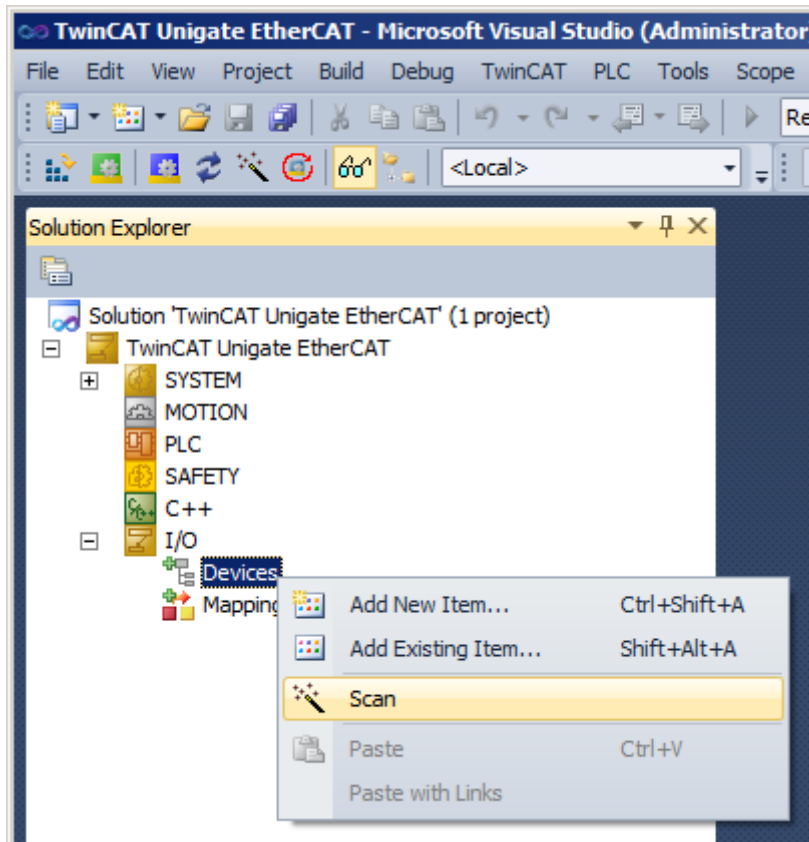
Starting a new project.



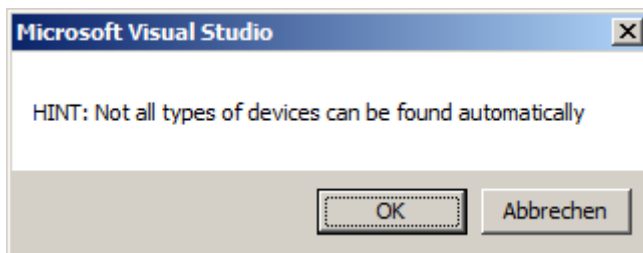
Click „OK“



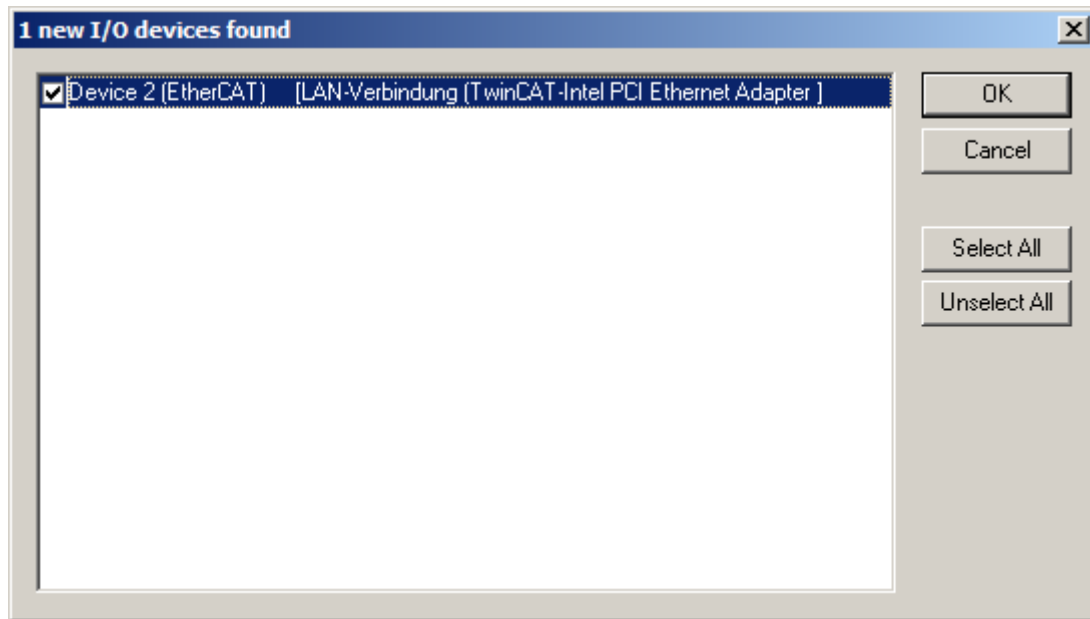
Scanning devices. (right mouse button) **Note:** If it is not possible to select “Scan”, please, check whether TwinCAT is started in config mode. 



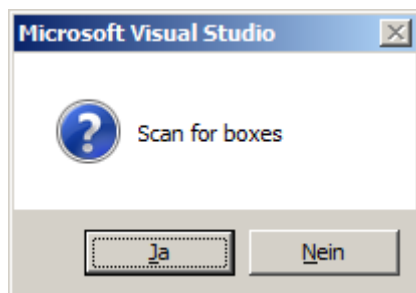
Click „OK“



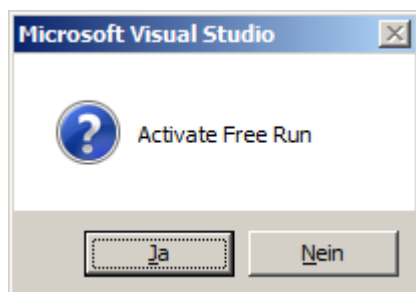
Click „OK“



Click „Ja“.



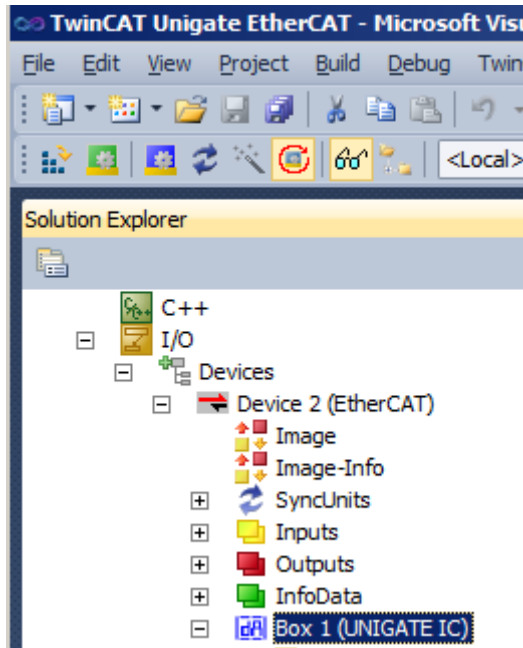
Click „Ja“.



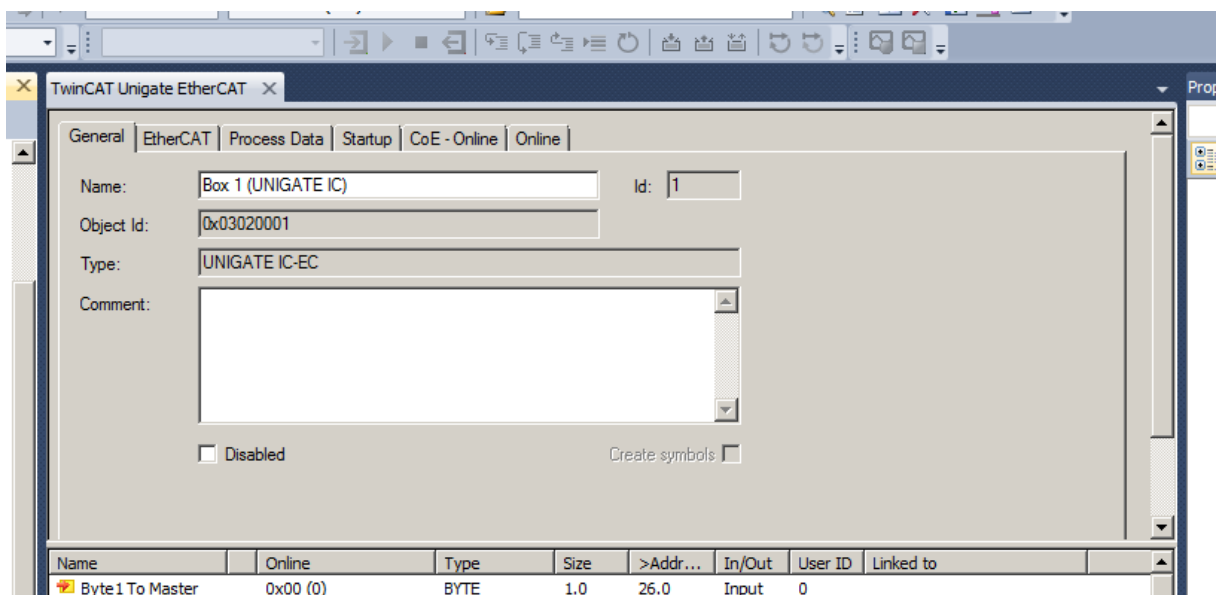
4. Input and Output Modules

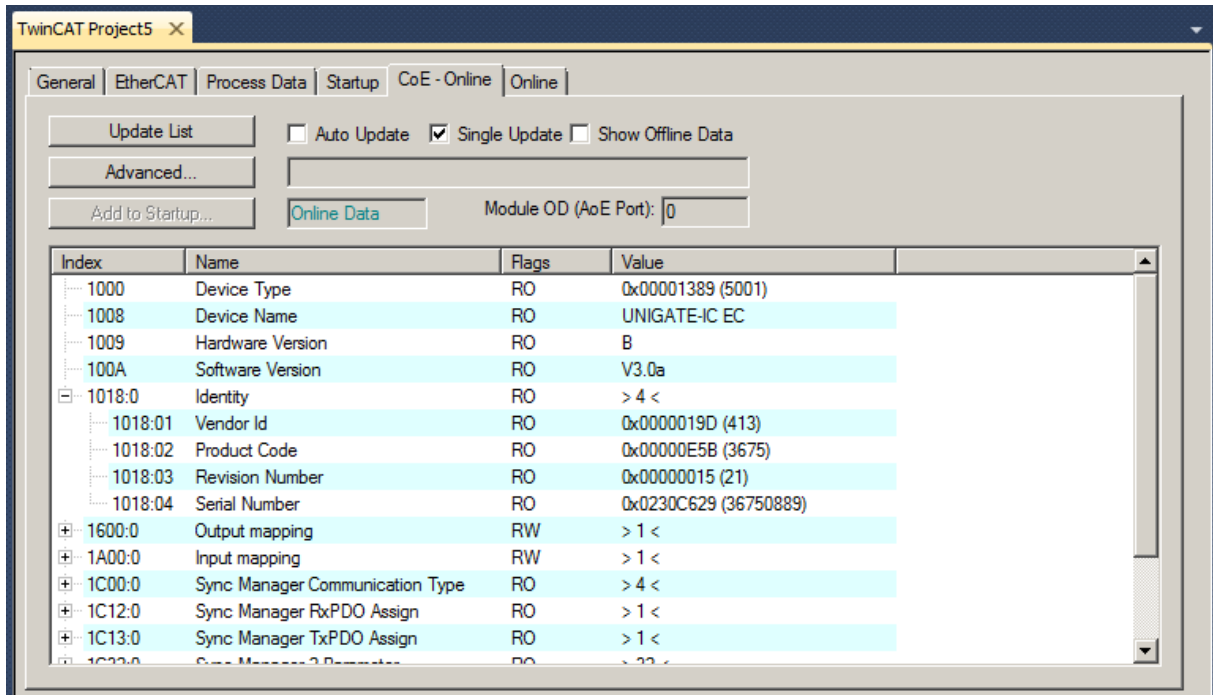
4.1 Input and Output Modules set in the XML file

2x click „Box 1“

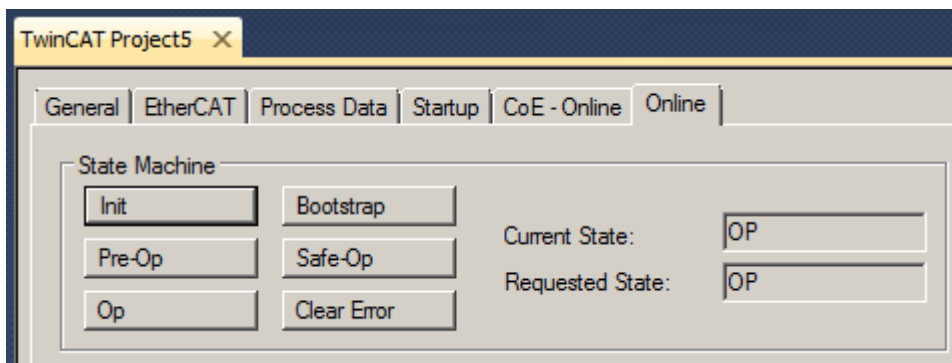


Click on tab “CoE – Online”. It is showing a Deuschmann UNIGATE®

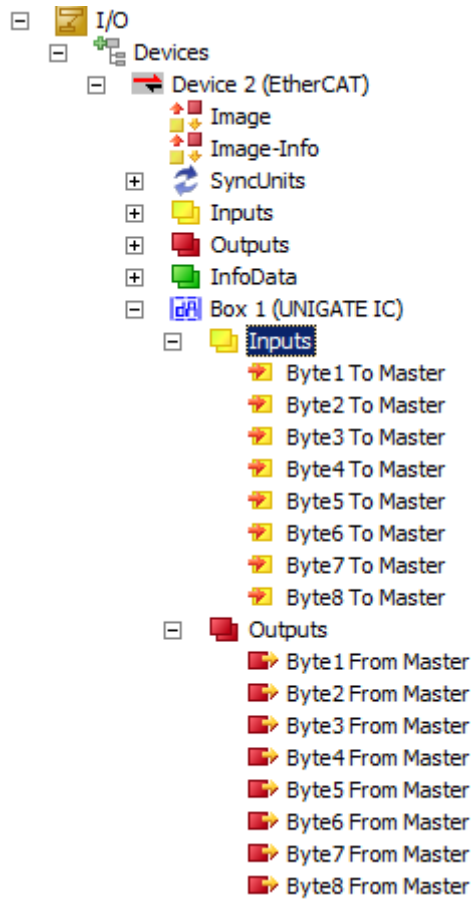




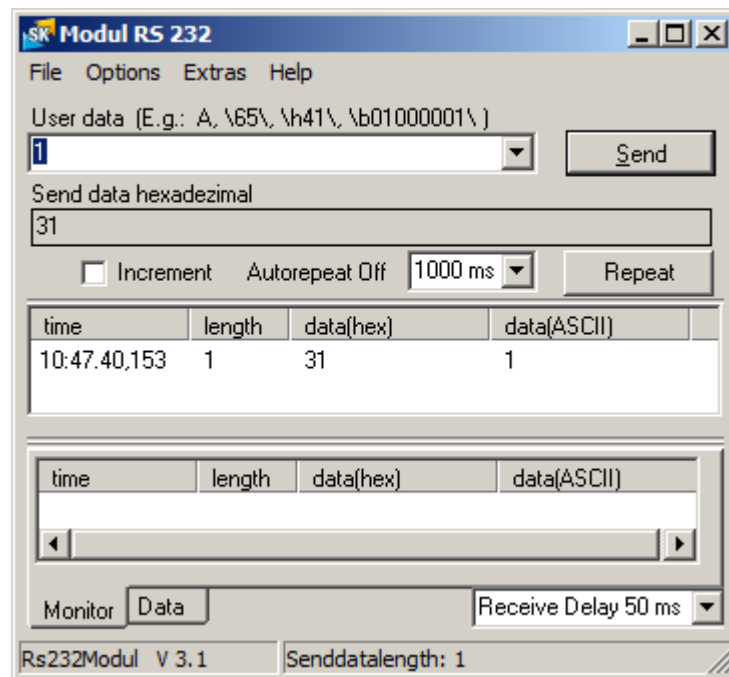
Click on tab "Online". It is showing the device in Operational mode".



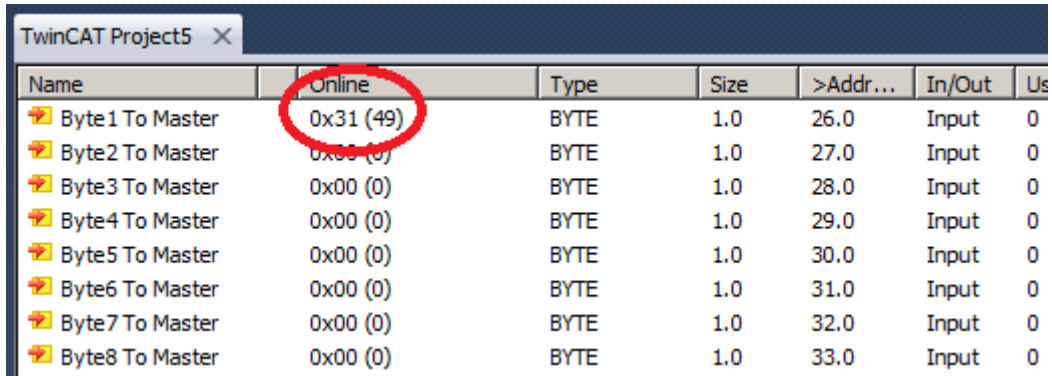
To change some data, click on Inputs or Outputs:



Send a value via Starter-Kit Module RS 232 to UNIGATE UART:



UNIGATE exchanges the received data to EtherCAT master:



Name	Online	Type	Size	>Addr...	In/Out	Us
Byte1 To Master	0x31 (49)	BYTE	1.0	26.0	Input	0
Byte2 To Master	0x00 (0)	BYTE	1.0	27.0	Input	0
Byte3 To Master	0x00 (0)	BYTE	1.0	28.0	Input	0
Byte4 To Master	0x00 (0)	BYTE	1.0	29.0	Input	0
Byte5 To Master	0x00 (0)	BYTE	1.0	30.0	Input	0
Byte6 To Master	0x00 (0)	BYTE	1.0	31.0	Input	0
Byte7 To Master	0x00 (0)	BYTE	1.0	32.0	Input	0
Byte8 To Master	0x00 (0)	BYTE	1.0	33.0	Input	0

