



**Deuschmann Automation**

Cam Controls | Fieldbus Gateways | Industrial Ethernet Products

## Short instruction



## Starterkit ROTARNOCK mit PROFIBUS

Artikel-Nr.: V3470E

Deuschmann Automation GmbH & Co. KG

Carl-Zeiss-Str. 8 D-65520 Bad Camberg ☎ +49-(0)6434 / 9433-0 📠 +49-(0)6434 / 9433-40  
eMail: [info@deuschmann.de](mailto:info@deuschmann.de) Internet: <http://www.deuschmann.de>

<b>1</b>	<b>Introduction</b> . . . . .	<b>4</b>
<b>2</b>	<b>Generating an AWF-file automatically through WINLOC32</b> . . . . .	<b>5</b>
<b>3</b>	<b>Operation of the „data component generator“</b> . . . . .	<b>10</b>
<b>4</b>	<b>Operation of the „data component simulator“</b> . . . . .	<b>12</b>
<b>5</b>	<b>Appendix</b> . . . . .	<b>17</b>
5.1	Hardware connection . . . . .	17
<b>6</b>	<b>Servicing</b> . . . . .	<b>18</b>
6.1	Returning a unit . . . . .	18
6.2	Internet . . . . .	18



## 1 Introduction

In order to be able to follow this brief instruction step-by-step you have to install a few software programs on your PC:

Programming software „WINLOC32“ on the Support CD under:  
\\Software\WINLOC\32Bit\SETUP\_WINLOC\_29\*\_D.exe

The menu item can be found under  
„Programme\Deutschmann\LOCON\_ROTARNOCK\WINLOC32\DEUTSCH“

Data component generator „DBGenerator“ on the Support CD under:  
\\Software\Tools\NEW DB Generator\SetupS7DBGenerator.exe

The menu item can be found under  
„Programme\Deutschmann\LOCON\_ROTARNOCK\tools\S7DBGenerator

Data component simulator „DBSimulator“ on the Support CD under:  
\\Software\Tools\DB Simulator\SetupDBSimulator.exe

The menu item can be found under  
„Programme\Deutschmann\LOCON\_ROTARNOCK\tools\Datenbausteinsimulator

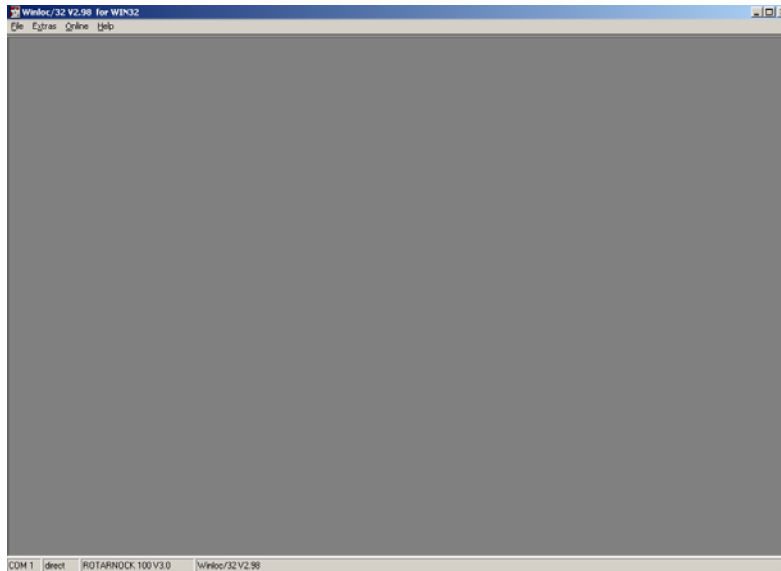
After the software-installation the hardware is to be set up as described in the „appendix“.

\*Version status

## 2 Generating an AWF-file automatically through WINLOC32

Starting WINLOC32

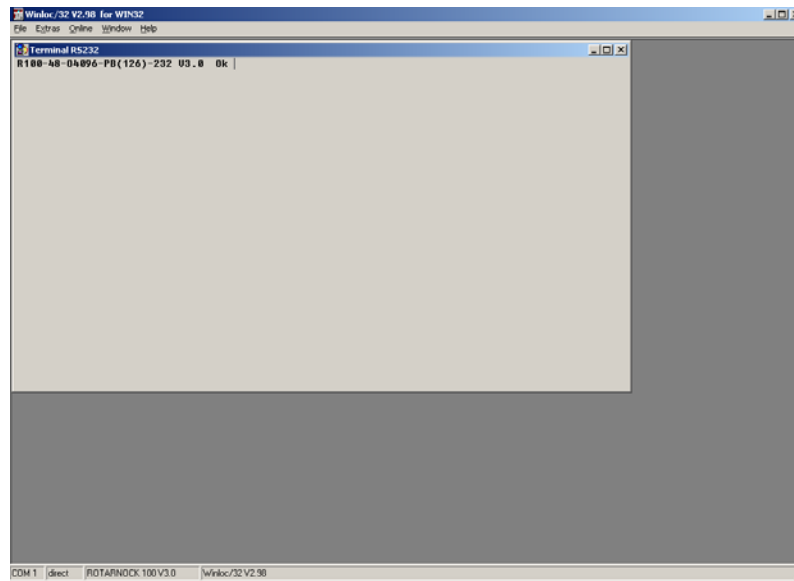
(For the further operation of WINLOC32 the menu Help is available)



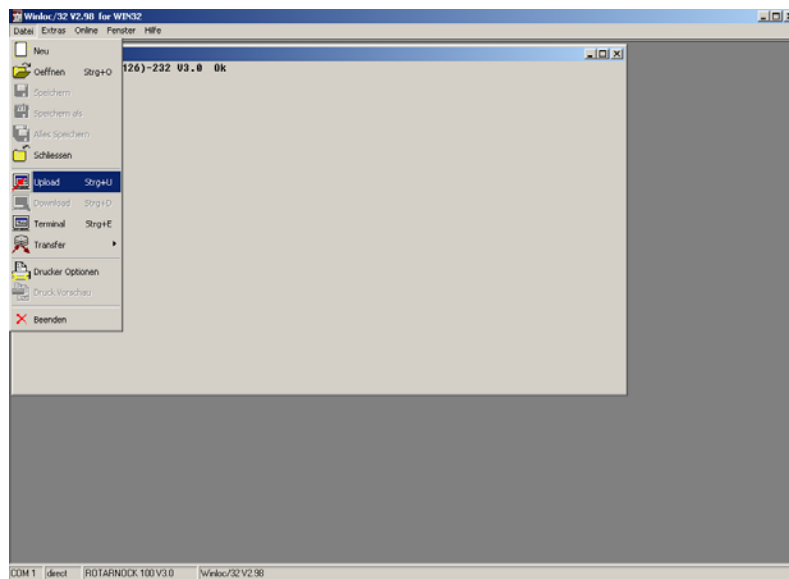
The communication interface between PC and RS232-interface from the ROTARNOCK has to be defined under „Extras -> Options“.



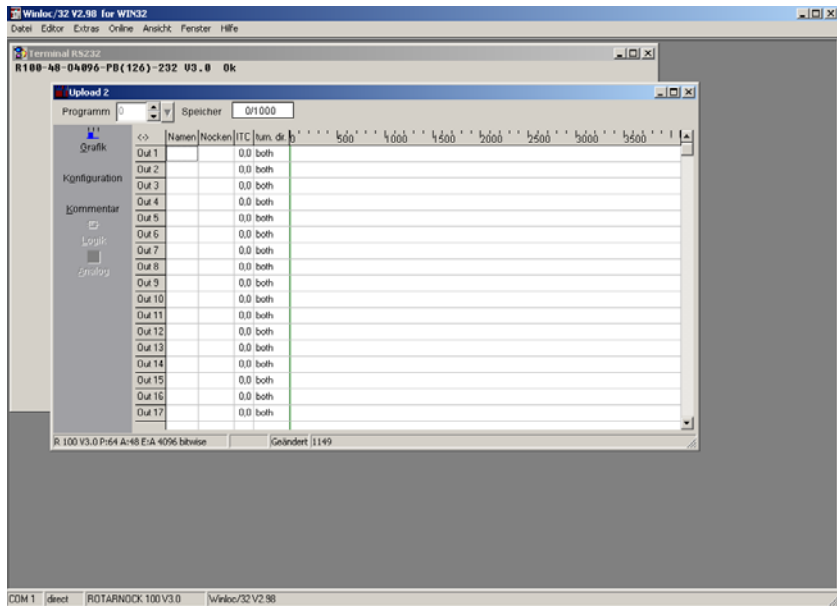
Supply the device with voltage. A window with the device's switch-on message opens.



Read-out the device now (File-> Upload) (configuration + cam data)

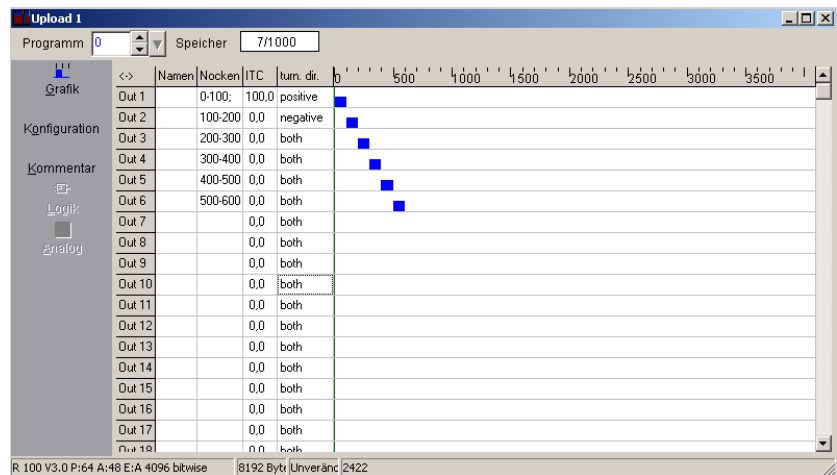


The graphic window displays an empty data record after the upload.

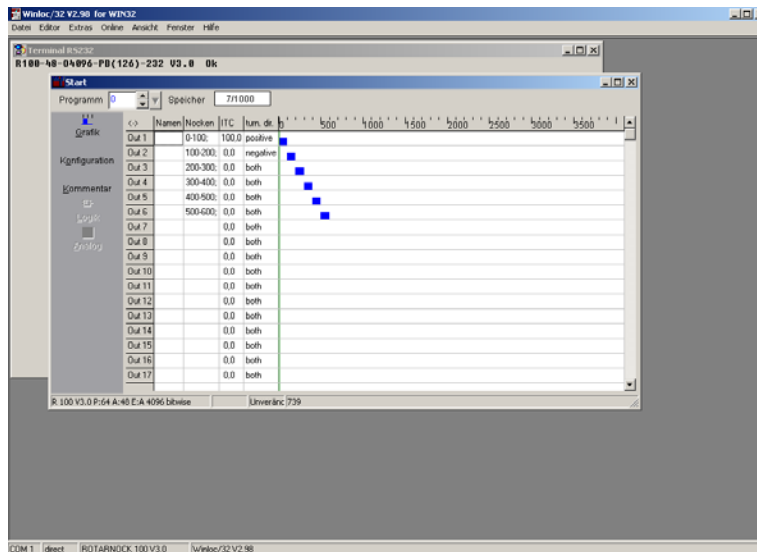


Now the cam values can be entered...

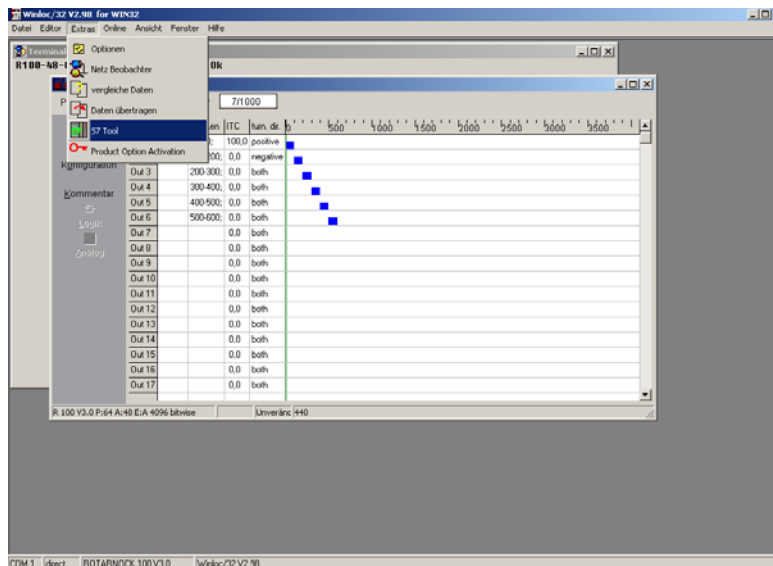
(Depending on the device some sectors or functions may be different from the picture below)



After entering the cams the data should be saved by: File -> Save as.

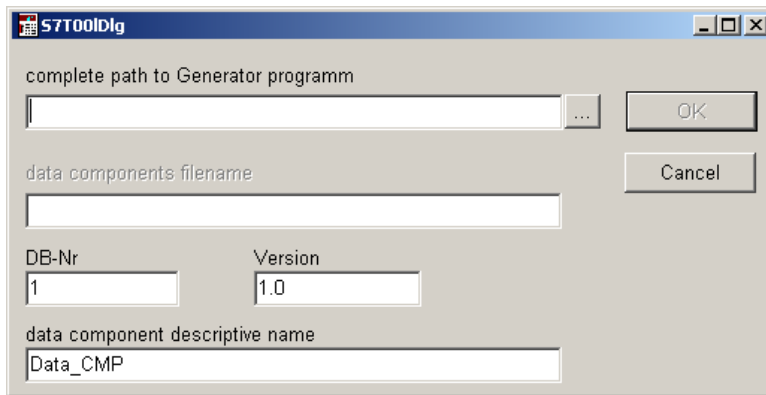


Now the values that have been entered into WINLOC32 have to be transferred to the software „S7DBGenerator.exe“. This is made by:  
 (Note: To transfer the data with WINLOC32 the file „s7csv.csv“ is generated by WINLOC32 when calling the function „S7 Tool“).



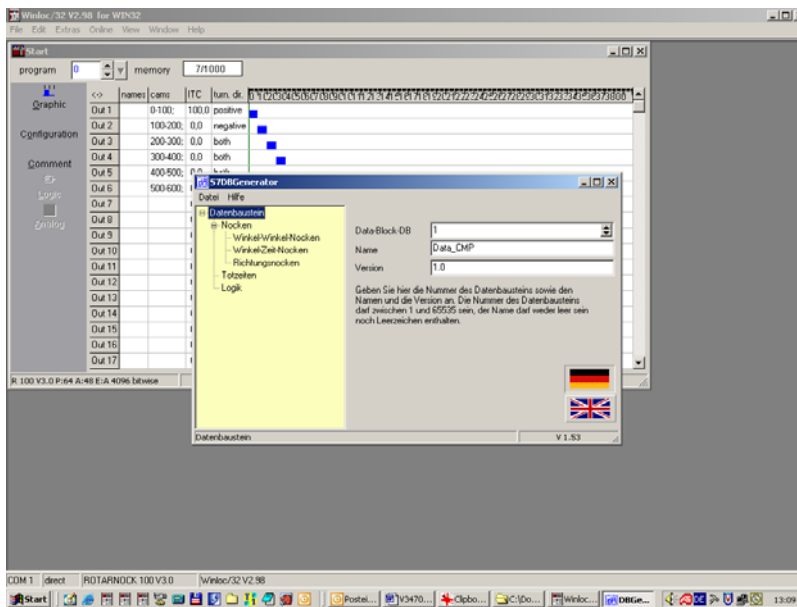


The following window opens...



...searching for the drive path of the „S7DBGenerator.exe“ (please use the Browser symbol [...] for it). The other input fields are not important for further proceeding. Confirm with OK afterwards.

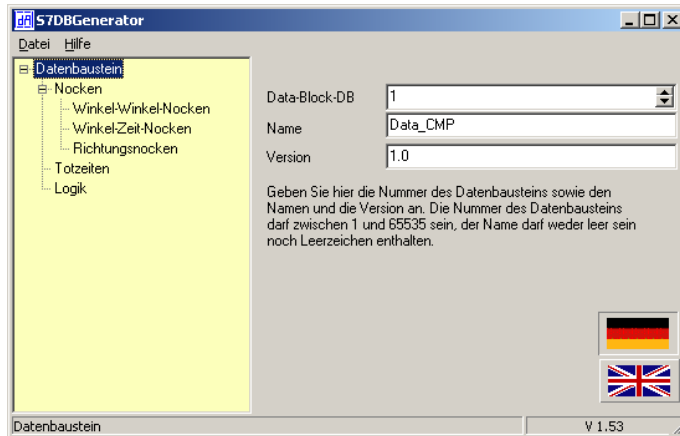
The following window should open now.



### 3 Operation of the „data component generator“

Start „S7DBGenerator“ (provided that it has not been started through WINLOC32 yet) and switch the language to English by left click on the English flag.

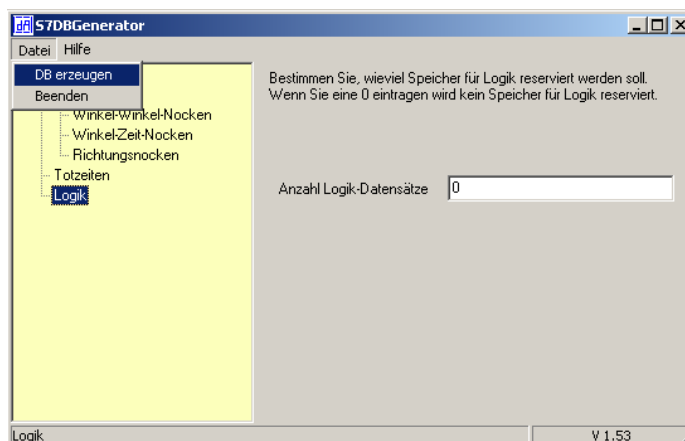
(For further operation of the DBGenerator the Help menue is available)



The software „S7DBGenerator.exe“ received all cam values.

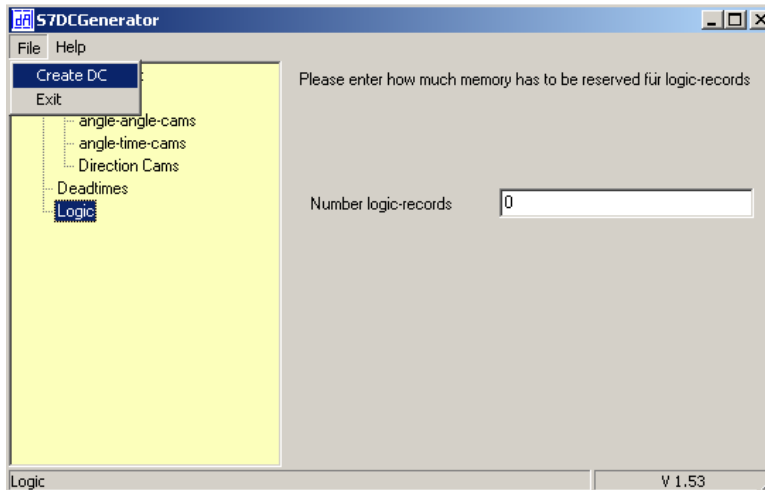
The line „angle-angle-cams“ should now contain the value „6“ (=number of angle-angle cams, that have been set in WINLOC32).

If desired, the value can also either be increased or reduced. If a value is defined > 6, then the first 6 cams are set in accordance with the WINLOC32-file and the following remain empty. If a value < 6 is selected it results in a depreciation of value!

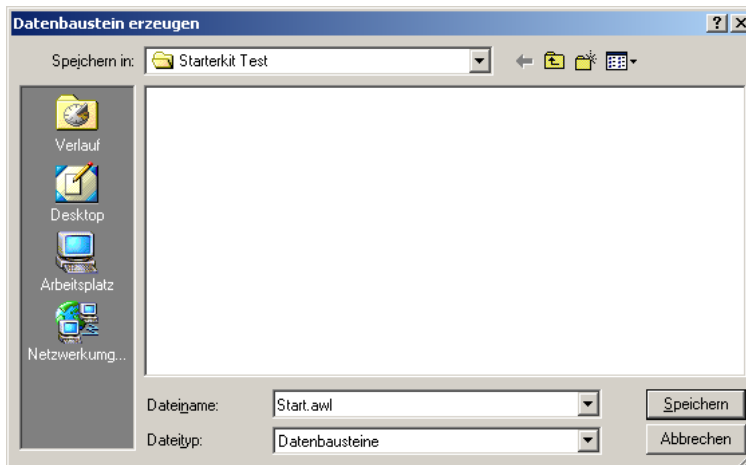


<b>Angle-angle cams</b>	<b>= 6</b>
<b>Angle-time cams</b>	<b>= 0</b>
<b>Direction cams</b>	<b>= 2</b>
<b>Idle times</b>	<b>= 1</b>
<b>Logic</b>	<b>= 0</b>

In order to generate the data component click on „File“ and „Create DC“.



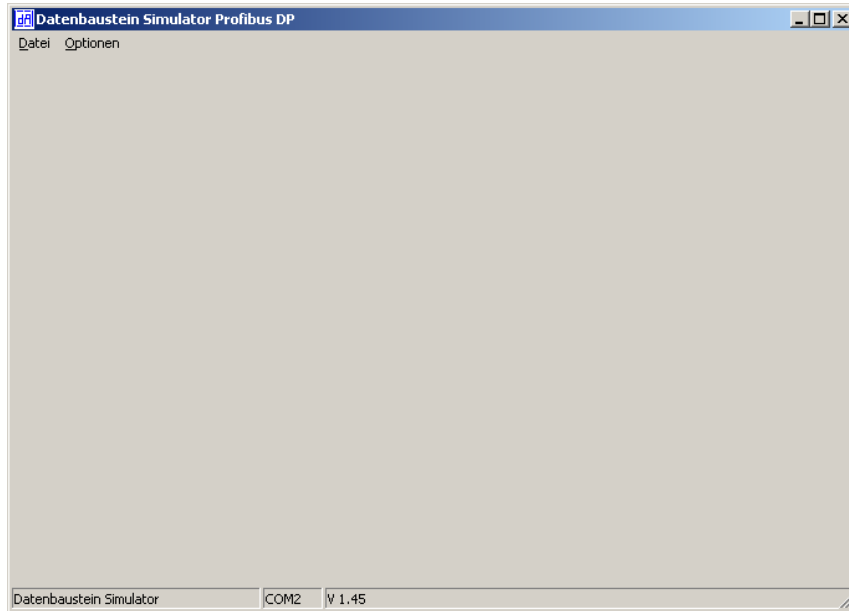
Allocate a file name...



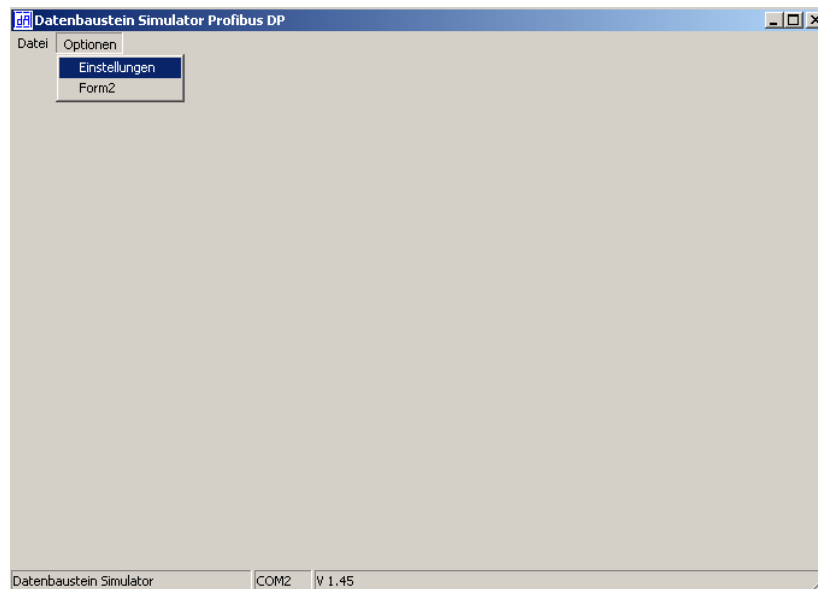
... and save.

## 4 Operation of the „data component simulator“

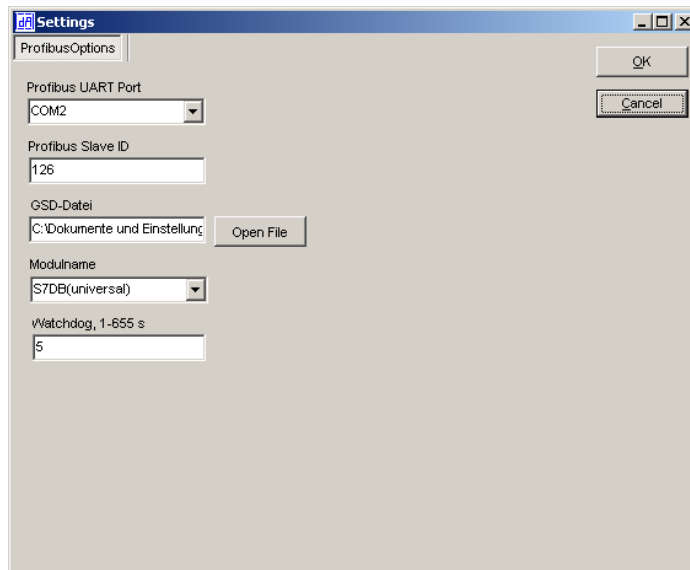
Start „DatenbausteinSimulator.exe“



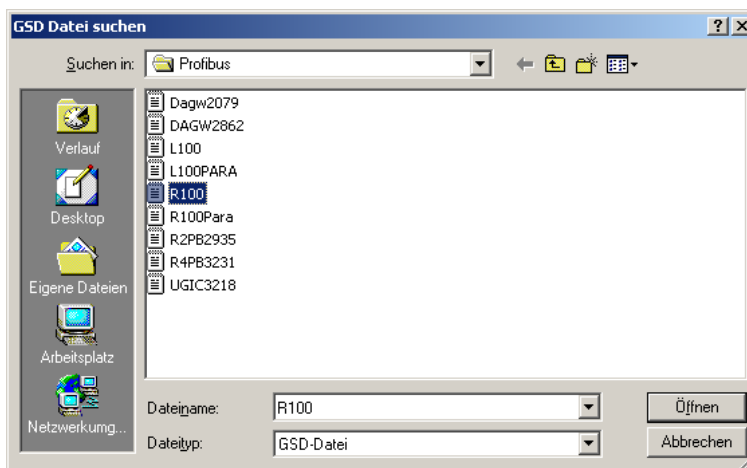
Under „Optionen“ -> „Einstellungen“ you will get to the settings...



... for the PROFIBUS-Dongle.



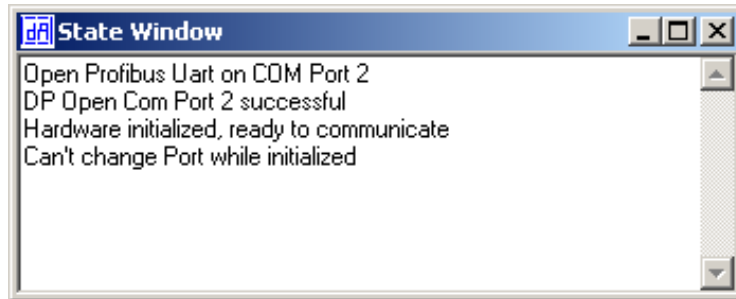
- Adjust the COM-port for the PROFIBUS UART Dongle.
- Enter the PROFIBUS Slave ID. „126“ is default on delivery (current ID is passed out with „(126)“ with the switch-on message).
- Select the GSD-file „R100.gsd“ under „Option File“ (on the Support DVD: Disc drive: \Support\Profibus)



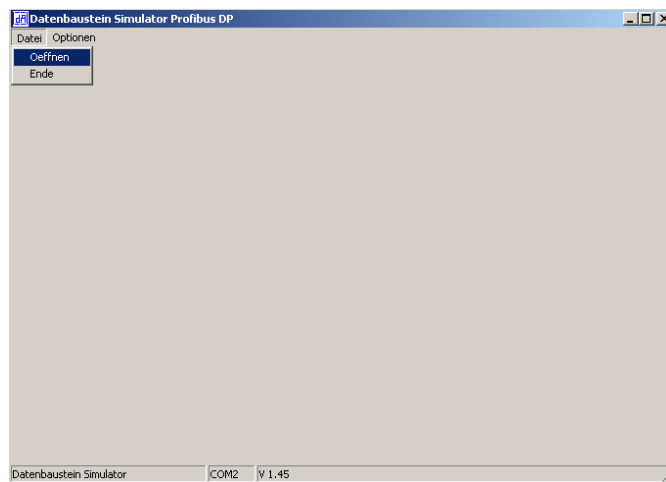
- Select the module name „S7DB(universal)“ from the GSD-file
- Set Watchdog to „5“

Confirm with OK.

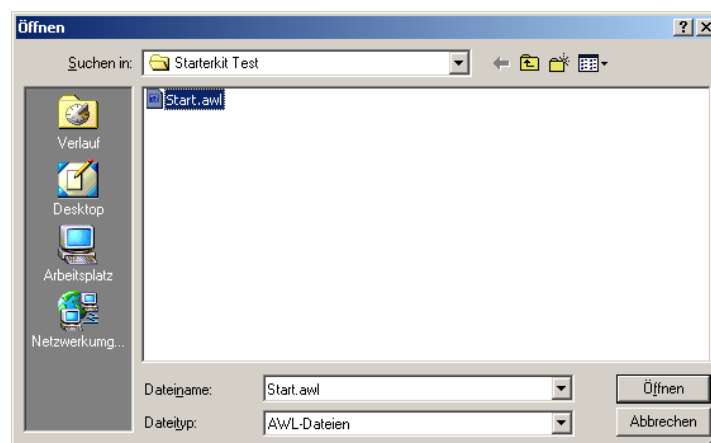
There is a second window in the background. After setting the right COM-port it should look as followed:



Under „Datei“ -> „Öffnen“



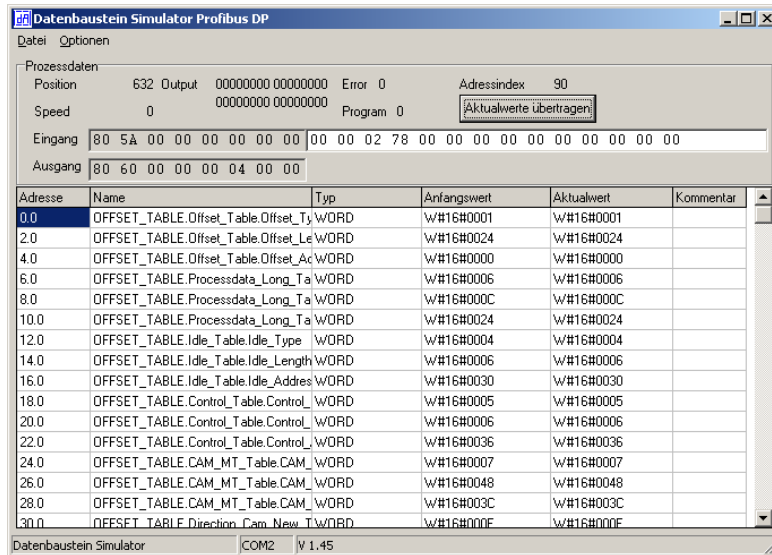
Select the generated AWL-file with a click of the left mouse button on the browser box [...].



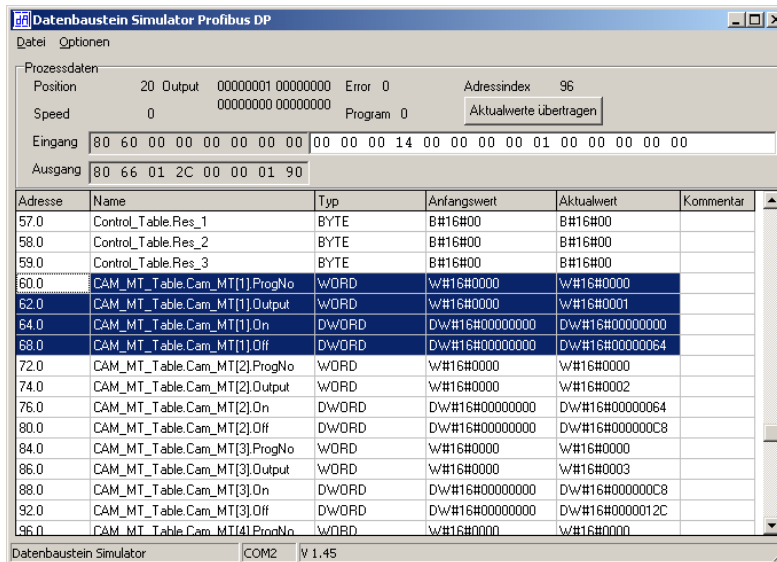
The view changes and the data component is displayed in the background.

Select „laden und Übertragung starten“ afterwards.

After a short moment you can see the current position and the „address index“ should be running continuously.



Output 1 should now be set from „0-100“ (h0 - h64)



Besides, the output status should change when the shaft is turned to a position between 0 and 100.

If you change a value, then the changed data has to be transferred to the PROFIBUS. This is made by selecting „Aktualwerte übertragen“ with the left mouse button.

This method makes the testing of a data component rather simple. It can now be imported into the S7 as described in the instruction manual V3526E „L100, 200, R80, 100 with Fieldbus connection“.

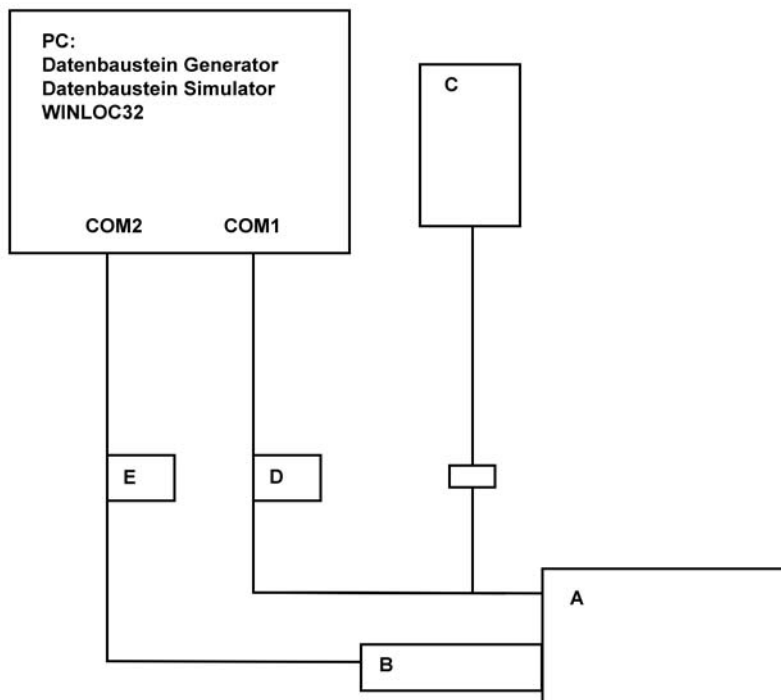
A sample project for the S7 can be found on the Support or it is available for download at [www.deutschmann.de](http://www.deutschmann.de).



## 5 Appendix

### 5.1 Hardware connection

A:	Cam control	V3406
B:	PROFIBUS Dongle	V2766
C:	Power supply	V2757
D:	RS232 cable	V2771
E:	Cable cam control - PC	V3467



## 6 Servicing

Should an error message occur, please first take all measures described in chapter Error messages.

Should questions occur that are not covered by this manual, please contact the responsible sales partner (see internet: <http://www.deutschmann.de>) or contact us directly.

Please keep the following information ready at hand when you call:

Device designation
Serial number (S/N)
Item No.
Error number and error description (see also following chapter 'Returning a unit')

You can reach us on the following Hotline number. Lines are open from Monday to Thursday from 8 am to 12 pm and from 1 pm to 4.00 pm, Friday from 8 am to 12 pm.

Central office & sales department: +49-(0)6434-9433-0  
Technical Hotline: +49-(0)6434-9433-33

Fax Central office & sales department: +49-(0)6434-9433-40  
Fax technical Hotline: +49-(0)6434-9433-49

E-mail technical Hotline: [hotline@deutschmann.de](mailto:hotline@deutschmann.de)

### 6.1 Returning a unit

If you return a unit to us, we require as comprehensive a description of the error as possible. We require the following information in particular:

- What error number was displayed?
- How is the unit externally wired (encoders, outputs, ..)? Please state all connections of the unit.
- What is the magnitude of the 24V supply voltage ( $\pm 0.5V$ ) with connected LOCON?
- What were you last doing on the unit (programming, error on power-up, ...)?

The more precise your information and error description, the more precisely we can check the possible causes.

Devices, that are sent in without an error description undergo a standard test. You have to bear the costs for that test even though no defect was found.

### 6.2 Internet

The current software WINLOC32 is available for download from our Internet-homepage (URL). There you can also find topical information on Deutschmann products, instruction manuals and a list of our distribution partners.

URL: [www.deutschmann.de](http://www.deutschmann.de)





