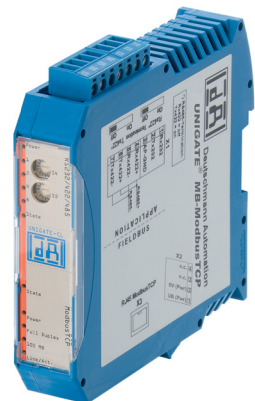


**Deuschmann**

*your ticket to all buses*

**Instruction Manual  
Universal Fieldbus-Gateway  
UNIGATE® MB - Fast Ethernet**



**Deuschmann Automation GmbH & Co. KG**  
[www.deuschmann.com](http://www.deuschmann.com) | [wiki.deuschmann.de](http://wiki.deuschmann.de)





<b>1</b>	<b>Information on CE marking of the module</b>	<b>8</b>
1.1	EU Directive EMC	8
1.2	Scope of application	8
1.3	Note installation guidelines	8
1.4	Installation of the unit	8
1.5	Working on switch cabinets	8
<b>2</b>	<b>Information for the machine manufacturers</b>	<b>9</b>
2.1	Introduction	9
2.2	EU Machinery Directive	9
<b>3</b>	<b>Introduction</b>	<b>10</b>
3.1	UNIGATE® MB software flow-chart	11
3.2	UNIGATE® application diagram	12
<b>4</b>	<b>Operation modes of the Gateway</b>	<b>13</b>
4.1	Configuration mode (config mode)	13
4.2	Test mode	13
4.3	Data exchange mode	13
<b>5</b>	<b>RS-interface</b>	<b>14</b>
5.1	RS-interfaces at the UNIGATE® MB	14
5.2	Buffer sizes at the UNIGATE® MB	14
5.3	Framing Check	14
<b>6</b>	<b>SSI-interface</b>	<b>15</b>
6.1	Initiation of the SSI-interface	15
6.1.1	Parameter sample frequency (Clock stretch)	15
6.1.2	Parameter Encoder monitoring (Check Encoder)	15
6.2	Hardware-wiring	16
<b>7</b>	<b>Mode of operation of the system</b>	<b>17</b>
7.1	General explanation	17
7.2	Interfaces	17
7.3	Data exchange	17
7.4	Possible data lengths	17
7.5	Startup phase	17
<b>8</b>	<b>Implemented protocols in UNIGATE® MB</b>	<b>18</b>
8.1	Protokoll: Transparent	18
8.1.1	Data structure	18
8.2	Protocol: Universal 232	18
8.2.1	Data structure	18
8.2.2	Fieldbus parameters	18
8.2.3	RS232 parameter table	19
8.2.3.1	Start character (232 Start character)	19
8.2.3.2	Length 232 (232 Length)	19
8.2.3.3	End character (232 End character)	19
8.2.4	Communication sequence	19
8.3	Protocol: 3964(R)	19
8.3.1	Data structure 3964R	20
8.3.2	Protocol definitions	20

8.3.3	Data communication . . . . .	20
8.3.3.1	Initiation of data communication by the low-priority user . . . . .	20
8.3.3.2	Conflicts . . . . .	20
8.3.3.3	Timeout times . . . . .	20
8.3.3.4	Retries . . . . .	20
8.3.3.5	Initiation of data communication by the high-priority user . . . . .	20
8.3.4	Protocol type 3964 . . . . .	21
8.4	Protocol: MODBUS-RTU . . . . .	21
8.4.1	Notes . . . . .	21
8.4.2	UNIGATE® as MODBUS-Master . . . . .	21
8.4.2.1	Preparation . . . . .	21
8.4.2.2	Data structure . . . . .	21
8.4.2.3	Communication sequence . . . . .	22
8.4.3	UNIGATE® as MODBUS-Slave . . . . .	22
8.4.3.1	Preparation . . . . .	22
8.4.3.2	Data structure . . . . .	22
8.4.3.3	Communication sequence . . . . .	22
8.4.4	UNIGATE® as Modbus-ASCII Master . . . . .	22
8.5	The trigger byte . . . . .	23
8.6	The length byte . . . . .	23
8.7	Protocol „Universal Modbus RTU Slave“ . . . . .	23
8.7.1	Data structure on the fieldbus side e.g.: PROFIBUS . . . . .	23
8.7.1.1	Example: FC1 + FC2 . . . . .	23
8.7.1.2	Example: FC3 (Read Holding Register) + FC4 (Read Input Register) . . . . .	24
8.7.1.3	Example: Write Single Coil FC5 . . . . .	25
8.7.1.4	Example: Write Single Register FC6 . . . . .	27
8.7.1.5	Example: Force multiple coils FC 15 . . . . .	27
8.7.1.6	Example: Preset multiple register FC16 . . . . .	28
8.8	Protocol „Universal Modbus RTU Master“ . . . . .	28
8.8.1	Data structure Fieldbus side (e.g. PROFIBUS): . . . . .	28
8.8.2	Data structure Application side: . . . . .	29
8.8.3	Configuration: via Wingate since wcf Datei Version 396 . . . . .	30
8.8.3.1	Example: Read coil status FC1 . . . . .	31
8.8.3.2	Example: Read input status FC2 . . . . .	32
8.8.3.3	Example: Read multiple register FC3 . . . . .	33
8.8.3.4	Example: Read input registers FC4 . . . . .	34
8.8.3.5	Example: Force single coil FC5 . . . . .	34
8.8.3.6	Example: Preset single register FC6 . . . . .	35
8.8.3.7	Example: Force multiple coils FC15 . . . . .	35
8.8.3.8	Example: Preset multiple register FC16 . . . . .	36
8.9	Protocol „Universal Modbus ASCII Master/Slave“ . . . . .	37
8.9.1	Appendix . . . . .	37
8.9.1.1	Example Configuration 1: . . . . .	37
8.9.1.2	Swap Word . . . . .	39
8.9.1.3	Example with Fast Ethernet . . . . .	41
<b>9</b>	<b>Hardware ports, switches and LEDs . . . . .</b>	<b>43</b>
9.1	Device labeling . . . . .	43

9.2	Connectors	43
9.2.1	Connector to the external device (RS-interface)	43
9.2.2	Connector supply voltage	44
9.2.3	Ethernet 10/100 BASE/T-connector	44
9.2.4	Power supply	44
9.3	LEDs	44
9.3.1	LED "(Ethernet) Power"	44
9.3.2	LED "Full Duplex"	45
9.3.3	LED "100 MB"	45
9.3.4	LED "Link/Act."	45
9.3.5	LED "(Ethernet) State"	45
9.3.6	LED "Power"	45
9.3.7	LED "State"	45
9.3.8	LEDs 1 / 2 / 4 / 8 (Error No. / Select ID)	45
9.4	Switches	45
9.4.1	Termination Rx 422 + Tx 422 (serial interface)	45
9.4.2	Rotary coding switches S4 + S5 (serial interface)	46
9.4.3	Rotary coding switch S6 (optional)	46
<b>10</b>	<b>Error handling</b>	<b>47</b>
10.1	Error handling at UNIGATE® MB	47
<b>11</b>	<b>Installation guidelines</b>	<b>49</b>
11.1	Installation of the module	49
11.1.1	Mounting	49
11.1.2	Removal	49
11.2	Wiring	49
11.2.1	Connection systems	49
11.2.1.1	Power supply	49
11.2.1.2	Equipotential bonding connection.	49
11.2.2	Ethernet communication interface	50
11.2.3	Line routing, shield and measures to combat interference voltage	50
11.2.4	General information on line routing	50
11.2.4.1	Shielding of lines	50
<b>12</b>	<b>Ethernet</b>	<b>52</b>
12.1	Network-addresses, network-connections	52
12.2	TCP-connection setup	52
12.3	Data exchange	52
12.3.1	TCP or UDP?	52
12.4	Data exchange mode	52
12.4.1	Direct data exchange	53
12.4.2	MODBUS-TCP	53
12.4.3	E-mail	53
12.4.4	Server	53
12.4.4.1	Webserver	53
12.4.4.2	FTP-server	53
12.4.4.3	Script update via FTP	54
12.4.4.4	System configuration update via FTP	54
12.4.4.5	File system	54

---

12.5	UNIGATE®-SCAN-function . . . . .	54
<b>13</b>	<b>Technical data . . . . .</b>	<b>56</b>
13.1	Device data . . . . .	56
13.1.1	Interface data . . . . .	57
<b>14</b>	<b>Commissioning guide . . . . .</b>	<b>58</b>
14.1	Note . . . . .	58
14.2	Components . . . . .	58
14.3	Installation . . . . .	58
14.4	Dimensional drawing UNIGATE® MB - Fast Ethernet . . . . .	58
14.5	Commissioning . . . . .	58
14.6	Ethernet connection . . . . .	58
14.7	Connection to the process device . . . . .	59
14.8	Shield connection . . . . .	59
14.9	Connecting the supply voltage . . . . .	59
<b>15</b>	<b>Servicing . . . . .</b>	<b>60</b>
15.1	Returning a device . . . . .	60
15.2	Downloading PC software . . . . .	60
<b>16</b>	<b>Annex . . . . .</b>	<b>61</b>
16.1	Explanations of the abbreviations . . . . .	61
16.2	Hexadecimal table . . . . .	62

#### Disclaimer of liability

We have checked the contents of the document for conformity with the hardware and software described. Nevertheless, we are unable to preclude the possibility of deviations so that we are unable to assume warranty for full compliance. The information given in the publication is, however, reviewed regularly. Necessary amendments are incorporated in the following editions. We would be pleased to receive any improvement proposals which you may have.

#### Copyright

Copyright (C) Deutschmann Automation GmbH & Co. KG 1997 – 2017. All rights reserved. This document may not be passed on nor duplicated, nor may its contents be used or disclosed unless expressly permitted. Violations of this clause will necessarily lead to compensation in damages. All rights reserved, in particular rights of granting of patents or registration of utility-model patents.



# 1 Information on CE marking of the module

## 1.1 EU Directive EMC

The following applies to the module described in this User Manual:

Products which bear the CE mark comply with the requirements of EU Directive „Electromagnetic Compatibility“ and the harmonized European Standards (EN) listed therein.

The EU Declarations of Conformity are available at the following location for perusal by the responsible authorities in accordance with the EU Directive, Article 10:

Deutschmann Automation GmbH & Co. KG, Carl-Zeiss-Straße 8, 65520 Bad Camberg, Germany.

## 1.2 Scope of application

The modules are designed for use in the industrial sector and comply with the following requirements.

Scope of application	Requirement applicable to	
	Emitted interference	Interference immunity
Industry	EN 55011, cl. A (2007)	EN 61000-6-2 (2005)

## 1.3 Note installation guidelines

The module complies with the requirements if you

1. comply with the installation guidelines described in the User Manual when installing and operating the module.
2. also follow the rules below on installation of the equipment and on working on switch cabinets.

## 1.4 Installation of the unit

Modules must be installed in electrical equipment rooms/areas or in enclosed housings (e.g. switch boxes made of metal or plastic). Moreover, you must earth the unit and the switch box (metal box) or at least the top-hat rail (plastic box) onto which the module has been snapped.

## 1.5 Working on switch cabinets

In order to protect the modules against static electrical discharge, the personnel must discharge themselves electrostatically before opening switch cabinets or switch boxes.

## **2 Information for the machine manufacturers**

### **2.1 Introduction**

The UNIGATE® module does not constitute a machine as defined by the EU "Machinery" Directive. Consequently, the module does not have a Declaration of Conformity in relation to the EU Machinery Directive.

### **2.2 EU Machinery Directive**

The EU Machinery Directive stipulates the requirements applicable to a machine. The term "machine" is taken to mean a totality of connected parts or fixtures (see also EN 292-1, Paragraph 3.1)

The module is a part of the electrical equipment of the machine and must thus be included by the machine manufacturer in the Declaration of Conformity process.

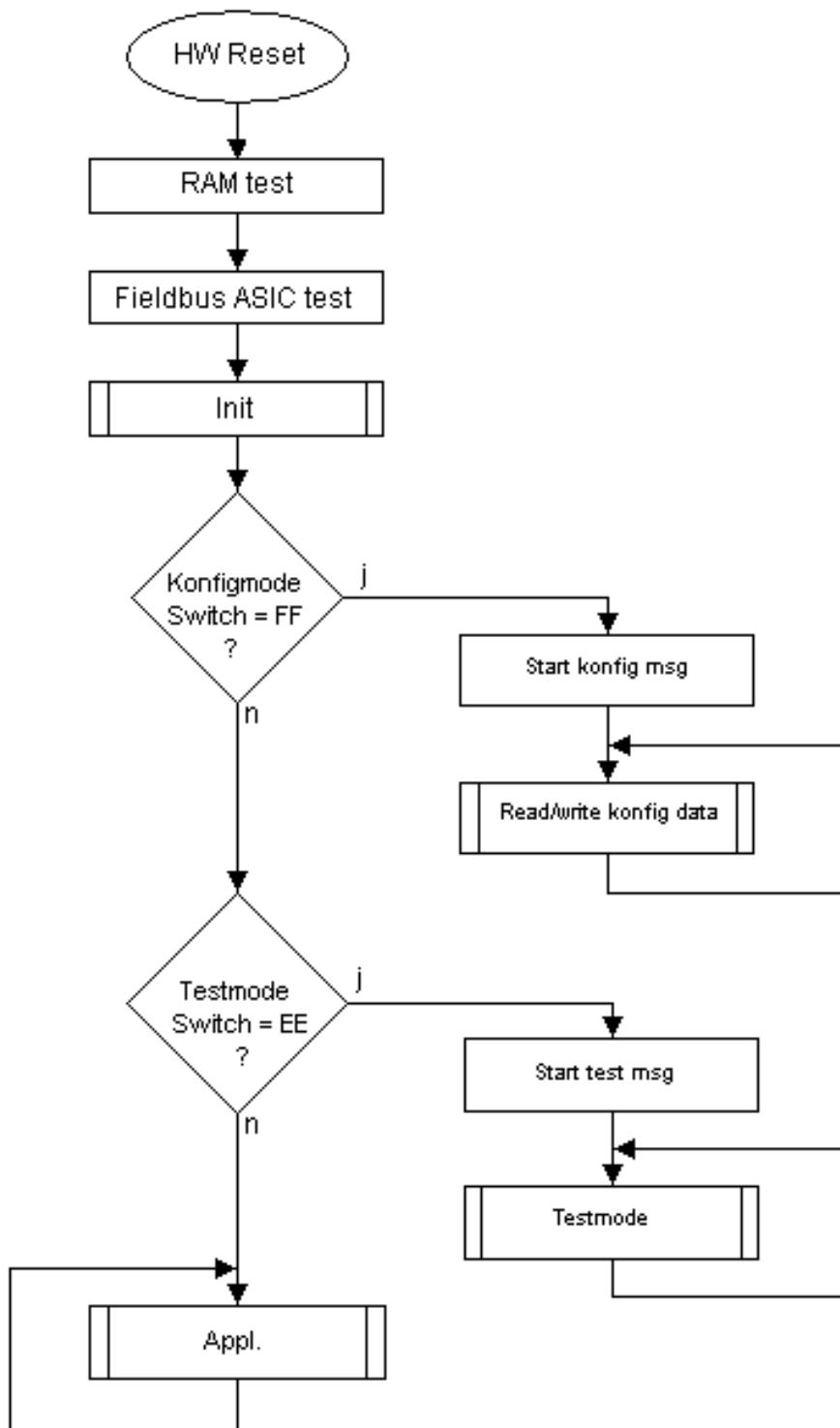
### 3 Introduction

The UNIGATE® MB-Fast Ethernet module serves to adapt a serial port to Ethernet networks. The terminal unit's protocol is converted in the UNIGATE® via a Script.

The module MB-Fast Ethernet essentially consists of the following hardware components:

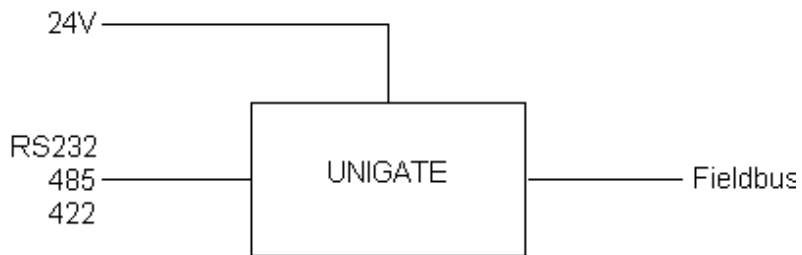
- Electrically isolated 10/100 Base-T-interface to Ethernet
- Ethernet controller W5100
- Microprocessor 89C51 RD2
- RAM and FLASH
- Serial interface (RS232, RS485 and RS422) to the device connected externally

### 3.1 UNIGATE® MB software flow-chart



### 3.2 UNIGATE® application diagram

The following graph shows a typical connection scheme.



## 4 Operation modes of the Gateway

### 4.1 Configuration mode (config mode)

The configuration mode serves to configure the Gateway. The following adjustments are possible in this mode.

- Loading a Script
- Updating the firmware
- Configuration of the Gateway

The Gateway will be starting in this mode in case both switches S4 as well as S5 are set on position "F" when switching on the Gateway. Right after switching on the Gateway in the configuration mode it will be sending its starting message, that looks analog with the following message: "RS-FE-CL (232/422/485) V3.0 [29] (c)dA Switch=0xFF Script(8k)="Leer" Author="Deutschmann Automation GmbH" Version="1.0" Date=21.08.2001 SN=47110001 IP=0.0.0.0".

In the configuration mode the Gateway always operates with the settings 9600 Bauds, no Parity, 8 Databits and 1 Stopbit, the RS-State LED will always be flashing red, the "Error No/Select ID" LEDs are of no account for the user. All software revisions contain the configuration mode.

### 4.2 Test mode

#### Setting of the test mode

The test mode is set by bringing the switches S4 and S5 in position "E". All other switches will not be taken into consideration for the setting of the test mode. Now the Gateway has to be restarted with these settings (by a short disconnection from the power supply).

In the test mode the Gateway always operates with the settings 9600 baud, no parity, 8 databits and 1 stopbit.

The test mode may be helpful to integrate the Gateway in the relevant environment, for instance to test the parameters of the RS-interfaces.

#### Mode of operation of the test mode

After the restart in the test mode the Gateway will be sending the values 0-15 in hexadecimal representation ("0".."F") in ASCII-coding on the serial side every second. Simultaneously the same values are issued binary on the fieldbus-interface.

In this mode the State-LED on the RS-side will be flashing red, the "Error No/Select ID" LEDs will be displaying the value in a binary way, that is issued that moment. Additionally each character that is received at one of the interfaces will also be output at the same interface as a local echo. On the fieldbus-side only the first byte will be used for the local echo, that means on receiving as well as on transmitting only the first byte of the bus data is looked at, the other bus data do not change compared to the last data.

### 4.3 Data exchange mode

The Gateway has to be in the data exchange mode, so that a data exchange between the RS-side of the Gateway and the fieldbus is possible. As long as the Gateway is not in the configuration mode or the test mode, the data exchange mode is active. In the data exchange mode the Gateway will execute the downloaded Script with the parameters, that have been preset through WINGATE.

## 5 RS-interface

### 5.1 RS-interfaces at the UNIGATE® MB

The UNIGATE® MB - Fast Ethernet has the interfaces RS232, RS422 and RS485 available.

### 5.2 Buffer sizes at the UNIGATE® MB

UNIGATE® MB features at the serial side a buffer with the size of 1024 bytes for input data and output data each.

### 5.3 Framing Check

The length of the stop bit received by the Gateway is checked through the function "Framing Check". Here the stop bit generated by the Gateway is always long enough, so that connected participants can evaluate the stop bit.

Please be aware that the function "Framing Check" becomes effective only in case of 8 data bit and the setting "No parity".

An error is detected and indicated by the Error LEDs in case the stop bit does not show the length 1 bit during the activated check.

The fixed setting for the "Stop Bit Framing Check" is "enabled".

## 6 SSI-interface

The UNIGATE® also supports the connection of applications or products, that communicate via SSI.

### 6.1 Initiation of the SSI-interface

The configuration of the SSI-interface is executed in the config mode with the WINGATE software, Protocol SSI. The encoder type and the sampling frequency are defined via the parameter "Resolution" (1 bit..15 bit, 24 bit...25 bit), "SSI Encoder Type" (Binary or Gray code) and "Clock stretch".

#### 6.1.1 Parameter sample frequency (Clock stretch)

You can change the sampling frequency. For this purpose a "Stretch value" is passed that inserts a waiting period after each clock edge.

If a 0 is passed, there is no waiting time.

Thus the following SSI sample frequencies may vary slightly:

Waiting time = 0	→ SSI-Clock ~ 333kHz (No Stretch)
Waiting time = 1	→ SSI-Clock ~ 185kHz
Waiting time = 2	→ SSI-Clock ~ 150kHz
Waiting time = 3	→ SSI-Clock ~ 125kHz
Waiting time = 4	→ SSI-Clock ~ 110kHz
Waiting time = 5	→ SSI-Clock ~ 100kHz
Waiting time = 6	→ SSI-Clock ~ 88kHz
Waiting time = 7	→ SSI-Clock ~ 80kHz
Waiting time = 8	→ SSI-Clock ~ 72kHz
Waiting time = 9	→ SSI-Clock ~ 67kHz
Waiting time = A	→ SSI-Clock ~ 62kHz
Waiting time = B	→ SSI-Clock ~ 58kHz
Waiting time = C	→ SSI-Clock ~ 54kHz
Waiting time = D	→ SSI-Clock ~ 50kHz
Waiting time = E	→ SSI-Clock ~ 48kHz
Waiting time = F	→ SSI-Clock ~ 45kHz

The bit time from which these frequencies were derived, calculate as follows:

$t = 3\mu\text{s} + (2 * (+ 0.6\mu\text{s} (n * 0.6\mu\text{s})))$ , where n corresponds to the "Stretch value" (1.. F).

Without clock extension (n = 0) remains at  $3\mu\text{s} \rightarrow 333\text{kHz}$ !

The max. Bit length of 32 bits and the slowest clock this results in a total readout time of  $32 * = 22\mu\text{s} \sim 700\mu\text{s}$ .

#### 6.1.2 Parameter Encoder monitoring (Check Encoder)

An encoder monitoring can be activated via the parameter "Check encoder", as long as the used SSI-encoder supports this function. After the last read encoder bit it is verified if the data line is still at Low for at least one bit. If the UNIGATE® does NOT detect this bit on Low, error 12 is issued. For example it can detect a cable break or a not connected encoder. However, it can also be a misconfigured bit length, or a too slow read out clock.



## 6.2 Hardware-wiring

The clock wires of the SSI-interface are placed onto the Tx-wires of the RS422-interface and the data wires onto the Rx-wires at the UNIGATE® MB.

X1 (3pin + 4pin screw-plug-connector):

Pin no.	Name	Function at SSI
1	Rx 232	n. c.
2	Tx 232	n. c.
3	AP-GND	n. c.
4	Rx 422+	SSI DAT+
5	Rx 422-	SSI DAT-
6	Tx 422+	SSI CLK+
7	Tx 422-	SSI CLK-

## 7 Mode of operation of the system

### 7.1 General explanation

Communication can be split into seven layers, Layer 1 to Layer 7, in accordance with the ISO/OSI model.

The Deutschmann Automation Gateways convert Layers 1 and 2 of the customized bus system (RS485 / RS232 / RS422) to the corresponding Fieldbus system. Layers 3 and 4 are being covered by the UDP/IP-protocol, TCP/IP-protocol. The Layers 5 and 6 are empty. Layer 7 is converted in accordance with chapter 7.3.

The Gateway can be configured via the software WINGATE.

### 7.2 Interfaces

The Gateway features the RS232-, RS422- and RS485-interfaces. The switching of the interfaces is done via the configuration (Parameter 232 Interface).

### 7.3 Data exchange

All data is transferred by the Gateway in dependence of the configuration.

### 7.4 Possible data lengths

The table below shows the maximum transferable data:

Input data	max. 1024 bytes	Variable: maximum value in this case
Output data	max. 1024 bytes	Variable: maximum value in this case

### 7.5 Startup phase

The Master sets up a TCP/IP- or a UDP/IP-connection to the Gateway during the startup phase. Only after a correct termination of the startup phase the data exchange with external devices will take place.

## 8 Implemented protocols in UNIGATE® MB

UNIGATE® MB is supplied with the Script "Universal Script Deutschmann". The configuration of the protocols is carried out in the configuration mode (see chapter 4.1) with the software WINGATE. See "Instructions UNIGATE® CL - Configuration with WINGATE". The PDF can also be found on our website under Support/Support/Downloads/Manuals.



**Attention:**

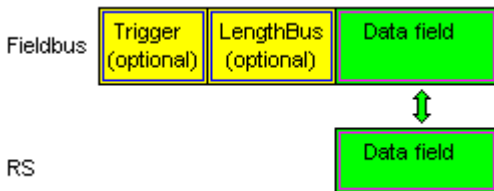
If a Reset Device is carried out it is possible (depending on the firmware version of the UNIGATE) that the "Universal Script" will get lost and must be played in again.

The Script can be found on the Deutschmann Support-DVD in the folder \Software\ProtocolDeveloper\Example\Universal\.

### 8.1 Protokoll: Transparent

The data is transferred bidirectional from the UNIGATE®.

#### 8.1.1 Data structure



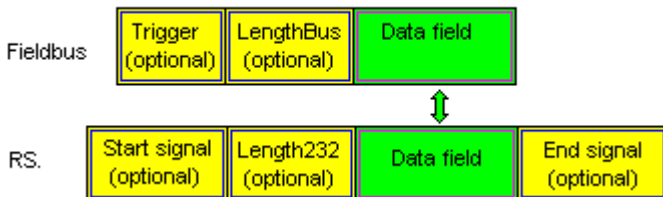
### 8.2 Protocol: Universal 232



The protocol designation "Universal 232" and the relation to the "RS232-interface" in the description have evolved over the years. The protocol also works with RS422 and RS485 though!

#### 8.2.1 Data structure

Data structure Universal 232 protocol



#### 8.2.2 Fieldbus parameters

Trigger byte: See "The trigger byte", Chapter 8.5, on page 23

Length byte: See "The length byte", Chapter 8.6, on page 23

## 8.2.3 RS232 parameter table

### 8.2.3.1 Start character (232 Start character)

If this character is defined, the gateway evaluates only the data at the RS232 interface following this start character. Each transmission from the gateway via the RS232 interface is initiated with the start character in this case.

### 8.2.3.2 Length 232 (232 Length)

If this byte is activated, the gateway, at the receive end, awaits as many bytes of useful data as specified in this byte by the RS232 transmitter. At the transmission end, the gateway then sets this byte to the number of useful data items transmitted by it. If byte "Length232" is not defined, the gateway, on reception at the RS232 interface, waits for the end criterion if this is defined. If no end criterion is defined either, as many characters as can be transferred in the fieldbus transmit buffer are read in via the RS232 interface.

As a special case for this parameter also a length byte with additional Timeout monitoring can be set in WINGATE. In that case the received characters will be discarded at a Timeout.



**Attention:**

*If "Timeout" is selected as end character, then this byte has no significance.*

### 8.2.3.3 End character (232 End character)

If this character is defined, the gateway receives data from the RS232 interface up to this character. The "Timeout" criterion can be defined as a special case. In this case, the gateway continues to receive characters until a defined pause occurs. In the special case "Timeout" the "Length 232-byte" has no significance. At the transmit end, the gateway inserts the end character, if defined, as the last character of a transmission.

## 8.2.4 Communication sequence

The useful data (data area) arriving via the fieldbus is copied in accordance with chapter 8.2.1 transparently into the RS232 data field and transferred via the RS interface, whereby the protocol is supplemented in accordance with the configuration (start character, end character...). NO acknowledgement is issued!

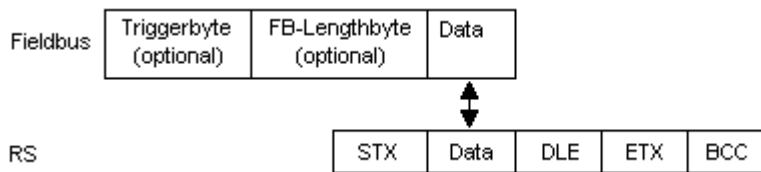
If the "Trigger byte" (see chapter 8.5) is active, data is sent only on a change of this byte. If the "Length byte" (see chapter 8.6) is active, only as many of the following bytes as specified there are transferred.

Receive data at the RS interface is evaluated in accordance with the configured protocol, and the data field (data area (see chapter 8.2.1)) is sent to the fieldbus Master. If more characters have been received than the fieldbus block length, the trailing bytes are truncated and an Rx Overrun is indicated. If less have been received, padding with 0 occurs. If the "Length byte" is active, the number of received useful data items is entered there. If the, "Trigger byte" is active, this is incremented by one after each complete reception operation at the RS interface.

## 8.3 Protocol: 3964(R)

The 3964 protocol is used to transfer data between two serial devices. One partner must be a high-priority partner and the other must be a low-priority partner in order to resolve initialisation conflicts.

### 8.3.1 Data structure 3964R



### 8.3.2 Protocol definitions

The telegram format is as follows:



- The received net data is forwarded (transparently) in both directions unchanged.
- **Attention:** The DLE-doubling is excluded from it; that means one DLE (10H) on the bus-side is sent on the RS-side twice. A double DLE on the RS-side is only sent once to the bus-master.
- Data blocking is not scheduled.
- The net data length is restricted to 236 bytes per telegram.
- Communication always runs between high-priority and low-priority communication partners.

### 8.3.3 Data communication

#### 8.3.3.1 Initiation of data communication by the low-priority user

If the low-priority user also receives an STX in response to a transmitted STX, it interrupts its transmit request, reverts to Receive mode and acknowledges the received STX with DLE.

A DLE in the data string is duplicated and included in the checksum. The BCC is computed from XORing all characters.

#### 8.3.3.2 Conflicts

#### 8.3.3.3 Timeout times

The timeout times are preset by the definition of the 3964R protocol and cannot be overwritten!  
 tq = acknowledgement timeout time (2s).

The acknowledgement timeout time is started after transmission of control character STX. If no positive acknowledgement arrives within the acknowledgement timeout time, the job is repeated (max. 2x). If it has not been possible to complete the job positively after two repetitions, the high-priority device nevertheless attempts to establish contact with the low-priority partner by transmitting STX (cycle corresponds to tq).

tz = character timeout time ( 200 ms)

If the 3964 R driver receives data, it monitors arrival of the individual characters within period tz. If no character is received within the timeout time, the protocol terminates transfer. No acknowledgement is sent to the coupling partner.

#### 8.3.3.4 Retries

In the event of negative acknowledgement or timeout, a telegram transmitted by the high-priority user is repeated twice. After this, the gateway signals communication as disturbed but still attempts to re-establish the connection.

#### 8.3.3.5 Initiation of data communication by the high-priority user

In the case of a negative acknowledgement or timeout, a telegram transmitted by the external device is repeated twice before a fault is signalled.

### 8.3.4 Protocol type 3964

The difference to protocol type 3964R is:

1. tq = acknowledge monitoring time
2. The checksum byte BCC is missing.

## 8.4 Protocol: MODBUS-RTU

### 8.4.1 Notes

- For reasons of simplicity, "MODBUS-RTU" is referred to as "MODBUS" in the text below.
- The terms "input" and "output" are always viewed from the gateway's point of view, i.e. fieldbus input data is the data sent by the fieldbus Master to the gateway.

### 8.4.2 UNIGATE® as MODBUS-Master

#### 8.4.2.1 Preparation

Before data exchange is commenced, the parameters "Baud rate", "Parity", "Start bits", "Stop bits" and "Data bits" and, if applicable, the "Trigger byte" and the "Length byte" must be set.

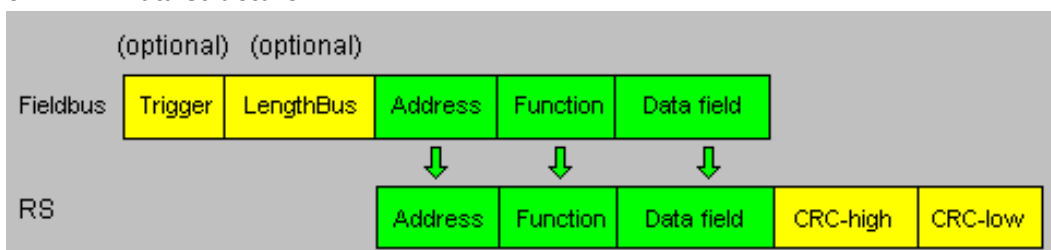
In addition, a "Response time" which corresponds to the maximum time up to which the Modbus Slave responds after a request must be set. UNIGATE® multiplies the value entered in WINGATE by 10 ms.

The user can choose whether the fieldbus requests are forwarded to the Modbus in an event-driven way (On Event) or on request (On Trigger).

The mode "Modbus request on demand" necessitates the first byte in the fieldbus containing a trigger byte (see chapter 8.5). This byte is not transferred to the Modbus and serves only to start a Modbus transmission. For this purpose, the gateway constantly monitors this trigger byte and sends data to the Modbus only when this byte has changed. In the reverse direction (to the fieldbus), the gateway transfers the number of received Modbus data records in this byte, i.e. this byte is incremented by the gateway after each data record.

If the "Length byte" is activated (see chapter 8.6), the gateway transfers only the number of bytes specified there. The number of received Modbus data items is saved in the direction of the fieldbus Master. The length always refers to bytes "Address" to "Data n" (inclusive in each case), always without CRC checksum.

#### 8.4.2.2 Data structure



### 8.4.2.3 Communication sequence

The gateway always acts as the Slave with respect to the fieldbus and always acts as the Master at the Modbus end. Thus, data exchange must always be started by the fieldbus Master. The gateway fetches this data which must be structured in accordance with chapter "Data structure", from the fieldbus Master, determines the valid length of the Modbus data if the length byte is not activated, adds the CRC checksum and sends this data record as a request on the Modbus.

The response of the selected Slave is then sent to the fieldbus Master by the gateway - without CRC checksum. If no response occurs within the stipulated "Response time", the gateway signals a "TIMEOUT ERROR".

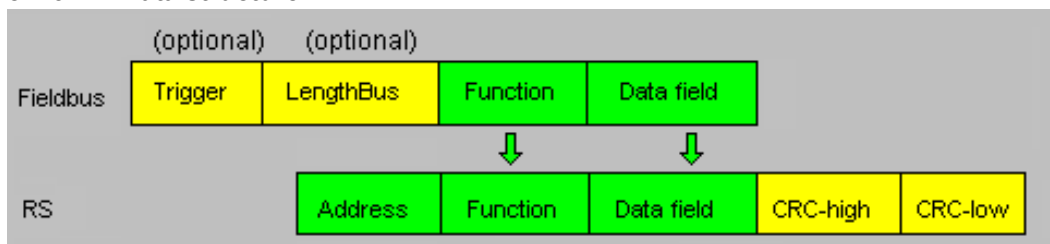
## 8.4.3 UNIGATE® as MODBUS-Slave

### 8.4.3.1 Preparation

Before data exchange is commenced, the parameters "Trigger byte" and "Length byte", "Baud rate", "Parity", "Start bits", "Stop bits" and "Data bits" must be set.

At the rotary switch on the RS-side the MODBUS-ID has to be set, under which the gateway is addressed in the Modbus.

### 8.4.3.2 Data structure



### 8.4.3.3 Communication sequence

The gateway always acts as the Slave with respect to the fieldbus and also acts as Slave at the Modbus end. A data exchange is always initiated by the MODBUS-Master via the RS-interface. If the Modbus-address (1st Byte) which is sent out by the Modbus-Master is identical with the address set on the gateway, the gateway sends the received data (without Modbus-address and CRC-check sum) to the fieldbus-master (look picture above). With it the gateway optionally completes as an introduction a Trigger byte and a Length byte.

The fieldbus-master detects when it has to analyse a record via the Trigger byte which is incremented by the gateway at every inquiry. The number of the following Modbus-data is to be found in the length byte.

Now the fieldbus-master has to analyse the Modbus-inquiry and it has to send back the answer in the same format (optionally with the leading Trigger byte and Length byte) via the fieldbus to the gateway.

The gateway then takes this answer and completes the Modbus-address and the CRC and sends the data to the Modbus-Master via the RS-interface. With it the data exchange is completed and the gateway waits for a new inquiry from the Modbus-Master.

## 8.4.4 UNIGATE® as Modbus-ASCII Master

On request!

-> For the description see chapter 8.4.2 "UNIGATE® as MODBUS-Master"

## 8.5 The trigger byte

In case the data records, that were supplied from the application to the gateway, do not change for a longer period, there is actually no need to send new data to the master.

The other way round, when it comes to a cyclical query of the gateway, a connected master has to be in the position to distinguish whether the application constantly provides identical data or if no new data were provided by the application for a longer period. For this reason, the user can set control of transmission via a trigger byte (data exchange → On Trigger). In this mode, the gateway always sends (and only then) when the trigger byte is changed.

Accordingly, the application program in the control in Normal mode cannot detect whether the gateway has received several identical telegrams. If Trigger-Byte mode is activated, the gateway increments the trigger byte each time a telegram has been received.

The first byte in the input/output data buffer is used as the trigger byte if this mode is activated.

## 8.6 The length byte

The user can configure whether the transmit length is also to be stored as a byte in the input/output data area (Fieldbus length byte → active). In transmit direction, as many bytes as specified in this byte are sent. On reception of a telegram the gateway enters the number of characters received.

## 8.7 Protocol „Universal Modbus RTU Slave“

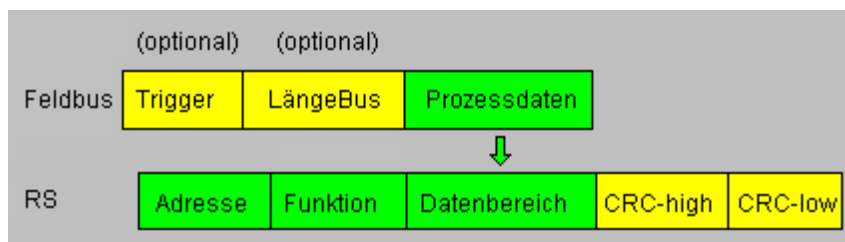
The UNIGATE® is a Modbus slave on the application side. The slave ID is set with the rotary coding switches S4 + S5 (S4 = High, S5 = Low).

### 8.7.1 Data structure on the fieldbus side e.g.: PROFIBUS

Applies to In and Out

1. Byte: trigger byte, optional (see chapter 8.5, The trigger byte)
2. Byte: fieldbus length byte, optional (see chapter 8.6, The length byte)
3. Byte: process data
4. Byte: process data
- ....

#### Data structure



#### 8.7.1.1 Example: FC1 + FC2

A Modbus Master (external device) sends a request with function code 1 or 2.

#### Note:

Modbus Master Request Address (High + Low)

Address request 01 .. 08 will always be on address 01.

Address request 09 .. 16 will always be on address 09.



Address request 17 .. 24 will always be on 17.

...

**Configuration:**

-----FIELDBUS-----	
Fieldbus ID	126
Data exchange	On Change
Fieldbus lengthbyte	active
-----APPLICATION-----	
Protocol	Universal Modbus RTU Slave

Fieldbus sends to UNIGATE®

08 01 02 03 04 05 06 07 08 09 0A 0B 0C 0D 0E 0F 10 11 12 13 14 15 16 17 18 19 1A...

**Note:** The 1. byte (0x08) is the fieldbus length byte. This means only the following 8 Bytes are stored in the UNIGATE®.

Connected Modbus Master sends request to the RS232/484 side of the UNIGATE®:

Start-Address 0001, Length 56 (38h), FC1 (-Read Coil Status)

[01] [01] [00] [00] [00] [38] [3d] [d8]

UNIGATE® sends response via RS232/485:

[01] [01] [07] [01] [02] [03] [04] [05] [06] [07] [6b] [c5]

Display of the data in the Modbus Master (FC1):

00001: <1>	00009: <0>	00017: <1>	00025: <0>	00033: <1>	00041: <0>	00049: <1>
00002: <0>	00010: <1>	00018: <1>	00026: <0>	00034: <0>	00042: <1>	00050: <1>
00003: <0>	00011: <0>	00019: <0>	00027: <1>	00035: <1>	00043: <1>	00051: <1>
00004: <0>	00012: <0>	00020: <0>	00028: <0>	00036: <0>	00044: <0>	00052: <0>
00005: <0>	00013: <0>	00021: <0>	00029: <0>	00037: <0>	00045: <0>	00053: <0>
00006: <0>	00014: <0>	00022: <0>	00030: <0>	00038: <0>	00046: <0>	00054: <0>
00007: <0>	00015: <0>	00023: <0>	00031: <0>	00039: <0>	00047: <0>	00055: <0>
00008: <0>	00016: <0>	00024: <0>	00032: <0>	00040: <0>	00048: <0>	00056: <0>

Example: StartAddress 0008, Length 80, FC2 (Read Input Status)

[01] [02] [00] [07] [00] [50] [c9] [f7]

UNIGATE® sends response via RS232/485:

[01] [02] [0a] [02] [03] [04] [05] [06] [07] [08] [00] [00] [00] [8f] [7a]

**8.7.1.2 Example: FC3 (Read Holding Register) + FC4 (Read Input Register)**

**Fieldbus sends to the UNIGATE®**

00 30 02 03 04 05 06 07 08 09 0A 0B 0C 0D 0E 0F 10 11 12 13 14 15 16 17 18 19 1A 20 20 20...

(The configuration is "Data exchange = On Trigger", with an additional 1. control byte in the fieldbus data.)

„Fieldbus length byte = active“, in this example 30h (48d), the UNIGATE® copies the following 48 Byte from the fieldbus into the internal storage.

Connected Modbus Master sends request to the RS232/484 side of the UNIGATE®

[01] [03] [00] [00] [00] [14] [45] [c5]

UNIGATE® sends response via RS232/485:

[01] [03] [28] [02] [03] [04] [05] [06] [07] [08] [09] [0a] [0b] [0c] [0d] [0e] [0f] [10] [11] [12] [13] [14]...  
... [15] [16] [17] [18] [19] [1a]

Display of the process data in the Modbus Master:

```
40001: <0203H>
40002: <0405H>
40003: <0607H>
40004: <0809H>
40005: <0A0BH>
40006: <0C0DH>
40007: <0E0FH>
40008: <1011H>
40009: <1213H>
40010: <1415H>
40011: <1617H>
40012: <1819H>
40013: <1A20H>
40014: <2020H>
40015: <2020H>
40016: <0000H>
40017: <0000H>
40018: <0000H>
40019: <0000H>
40020: <0000H>
```

### 8.7.1.3 Example: Write Single Coil FC5

The Fieldbus Master sent the following data to the UNIGATE® once:

07 01 02 03 04 05 06 07 08 09 0A 0B 0C 0D 0E 0F 10 11 12 13 14 15 16 17 18 19 1A 20 20 20...

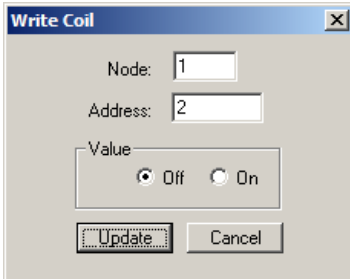
1. Byte = Fieldbus length byte

The following 7 byte are stored in the UNIGATE®, the rest is not overwritten.

With FC1 and the coil length = 80 (10 Bytes) a Modbus Master reads out the following data:

```
00001: <1> 00017: <1> 00033: <1> 00049: <1> 00065: <0>
00002: <0> 00018: <1> 00034: <0> 00050: <1> 00066: <0>
00003: <0> 00019: <0> 00035: <1> 00051: <1> 00067: <0>
00004: <0> 00020: <0> 00036: <0> 00052: <0> 00068: <0>
00005: <0> 00021: <0> 00037: <0> 00053: <0> 00069: <0>
00006: <0> 00022: <0> 00038: <0> 00054: <0> 00070: <0>
00007: <0> 00023: <0> 00039: <0> 00055: <0> 00071: <0>
00008: <0> 00024: <0> 00040: <0> 00056: <0> 00072: <0>
00009: <0> 00025: <0> 00041: <0> 00057: <0> 00073: <0>
00010: <1> 00026: <0> 00042: <1> 00058: <0> 00074: <0>
00011: <0> 00027: <1> 00043: <1> 00059: <0> 00075: <0>
00012: <0> 00028: <0> 00044: <0> 00060: <0> 00076: <0>
00013: <0> 00029: <0> 00045: <0> 00061: <0> 00077: <0>
00014: <0> 00030: <0> 00046: <0> 00062: <0> 00078: <0>
00015: <0> 00031: <0> 00047: <0> 00063: <0> 00079: <0>
00016: <0> 00032: <0> 00048: <0> 00064: <0> 00080: <0>
```

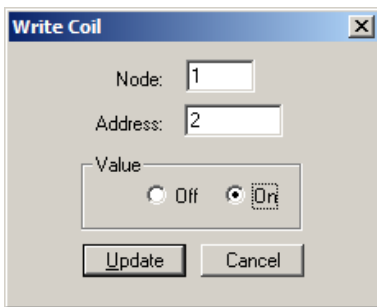
The fieldbus output data is only updated if it's triggered via a write command from the RS side. For example via FC 5 :



Address 0002 stays unchanged on 0, however, the fieldbus output data is updated. After a reset they are NULL (1st row) at first and are then updated (2nd row):  
 00 ...  
 1F 01 02 03 04 05 06 07 00 00 00 00 00 00 00 00 00 00 00 00 00 00 00 00 00 00...

The 1. byte is the fieldbus length byte. It contains the number of usable characters, followed by the payload. The user data (internal buffer) is no bigger than 1024 byte.

In the following example the Bit (Coil) in Address 0002 is set to High (1):



The fieldbus data is updated:  
 1F **03** 02 03 04 05 06 07 00 00 00 00

The internal buffer reserves this value, which means it can be read back by the Master via FC1 Read Coil status:

```
00001 : <1>
00002 : <1>
00003 : <0>
00004 : <0>
00005 : <0>
00006 : <0>
00007 : <0>
```





### 8.8.2 Data structure Application side:

According to Modbus RTU Master definition.

Supported functions:

Read coil status FC1	(No. of Points = Bit)
Read input status FC2	(No. of Points = Bit)
Read multiple register FC3	(No. of Points = Word)
Read input registers FC4	(No. of Points = Word)
Force single coil FC5	(No. of Points – not used = fix 1 Bit)
Preset single register FC6	(No. of Points – not used = fix 1 Word)
Force multiple coils FC15	(No. of Points = Bit)
Preset multiple register FC16	(No. of Points = Word)

**Note:**

status and coil = 1 Bit, register = 16 Bit.

FC 1 + 2 as well as FC 3 + 4 are principally the same, the only difference is the definition of the start address.

At FC1 it starts at Null, at FC2 at 10 000.

At FC3 it starts at 40 000, at FC4 at 30 000

### 8.8.3 Configuration: via Wingate since wcf Datei Version 396

Parameter Name	value range	Explanation
<b>Modbus Timeout (10ms)</b>	1 ... 255 (10ms ... 2550ms)	Max. Waiting time for the "Response" before an error 9 is generated by timeout. If "RX Poll Retry" > 0 an error is only generated after retries.
<b>RX Poll Retry</b>		Retry of the last, invalid replied "Request"
<b>RX Poll Delay (10ms)</b>		Pause before the next "Request"

#### Configurations parameter for a Modbus Request:

**Req. 1 Slave ID:** Slave ID of the Modbus slave participant

**Req. 1 Modbus Function:** see "supported functions"

**Req. 1 StartAdr (hex):** Start address (High / Low) of the Modbus register from which should be read/written

**Req. 1 No. of Points (dec):** Number of the to read/to write register/coils

**Req. 1 Fieldbus Map Adr(Byte):** Position of the to be copied process value from/to the fieldbus range, depending on the write/read-command. If the value is NULL the process data is automatically lined up behind the other.

Up to 24 requests can be configured.

#### Additional configuration possibilities in the setting „Req. ... Modbus Function“:

**jump to Req. 1:** jump to 1. request entry

**disable this Req.:** skip this request and perform the next request entry.

„(10ms)“ : adjustable in 10ms steps

„(hex)“: Enter in hexadecimal style.

„(dec)“: Enter in decimal style.

„(Byte)“: Counting in bytes, starting at the position Null. Attention: For read commands, e.g. FC3, after the trigger- and lengthbyte the first process value is the position nulll, which is copied to the fieldbus to the PLC.  
For write commands, e.g. FC16, the position Null is the trigger byte.

**8.8.3.1 Example: Read coil status FC1**

Configuration

Req. 3 Slave ID	1
Req. 3 Modbus Function	Read coil status FC1
Req. 3 StartAdr (hex)	0004
Req. 3 No. of Points (dec)	2
Req. 3 Fieldbus Map Adr(Byte)	6

Data content Modbus Slave

Device Id:

Address:  MODBUS Point Type:

Length:

00001: <0>	00009: <0>	00017: <0>
00002: <0>	00010: <0>	00018: <0>
00003: <0>	00011: <0>	00019: <0>
00004: <0>	00012: <0>	00020: <0>
00005: <1>	00013: <0>	00021: <0>
00006: <0>	00014: <0>	00022: <0>
00007: <0>	00015: <0>	00023: <0>
00008: <0>	00016: <0>	00024: <0>

UNIGATE® reads Address 5 + 6 and copies it into the 6. byte of the output buffer.

Fieldbus output data (UNIGATE® -> SPS)

66 07 00 00 00 00 00 00 01 00 00 00 00 00 00 00 00 00 00 00 0

1. Byte = Trigger byte (value = 0x66 )
2. Byte = Fieldbus length byte (value = 0x07)
3. Byte = Fieldbus Map Adr 0 (value = 0x00)
4. Byte = Fieldbus Map Adr 1 (value = 0x00)
5. Byte = Fieldbus Map Adr 2 (value = 0x00 )
6. Byte = Fieldbus Map Adr 3 (value = 0x00)
7. Byte = Fieldbus Map Adr 4 (value = 0x00)
8. Byte = Fieldbus Map Adr 5 (value = 0x00)
9. Byte = Fieldbus Map Adr 6 (value = 0x01) see configuration
10. Byte = Fieldbus Map Adr 7 (value = 0x00)
11. Byte ...

In the following example the value in address 6 in the Modbus Master is changed from 0 to 1.

00001: <0>
00002: <0>
00003: <0>
00004: <0>
00005: <1>
00006: <1>
00007: <0>
00008: <0>



```
AD 07 00 00 00 00 00 00 01 00 00 00 00 00 00 00
AE 07 00 00 00 00 00 00 03 00 00 00 00 00 00 00
```

The modification can be seen here:

9. Byte = Fieldbus Map Adr 6 (Wert = 0x01) => 0x03

A modification of address 7 in the Modbus slave has no consequences to the fieldbus output side because "No. Of Points = 2" is set in the configuration.

```
00001: <0>
00002: <0>
00003: <0>
00004: <0>
00005: <1>
00006: <1>
00007: <1>
00008: <0>
```

The value stays unchanged on 0x03:  
1F 07 00 00 00 00 00 00 03 00 00 00 0

### 8.8.3.2 Example: Read input status FC2

The following example shows the content of address 10007 ... 10009 is mapped/copied into the 8. fieldbus output byte.

Req. 1 Slave ID	1
Req. 1 Modbus Function	Read input status FC2
Req. 1 StartAdr (hex)	0006
Req. 1 No. of Points (dec)	3
Req. 1 Fieldbus Map Adr(Byte)	8

Device Id:

Address:  MODBUS Point Type

Length:

```
10001: <0>
10002: <0>
10003: <0>
10004: <0>
10005: <0>
10006: <0>
10007: <1>
10008: <0>
10009: <0>
10010: <0>
```

```
76 09 00 00 00 00 00 00 00 01 00 00 00 00
```

Here the content of the address 10009 is changed from 0 -> 1

In the following example only the "No. Of Points" is switched to 10.

Which means that now 10 Bits => 2 Byte are read out. This is also the reason why the fieldbus length byte (2. fieldbus byte) at 0x0A increases by 1 Byte.

### 8.8.3.3 Example: Read multiple register FC3

Protocol	Universal Modbus RTU Master
-- Modbus Master Request --	
Modbus Timeout (10ms)	25
RX Poll Retry	0
RX Poll Delay (10ms)	0
-----	
Req. 1 Slave ID	1
Req. 1 Modbus Function	Read multiple register FC3
Req. 1 StartAdr (hex)	0001
Req. 1 No. of Points (dec)	2
Req. 1 Fieldbus Map Adr(Byte)	0

RX Poll Delay = 0 is automatically set to 1 by the firmware.

Modbus-Request:

Byte 1	Byte 2	Byte 3	Byte 4	Byte 5	Byte 6	Byte 7	Byte 8
Slave ID	Modbus Function	StartAdr High	StartAdr Low	No. of Points High	No. of Points Low	CRC High	CRC Low
1	3	0x00	0x01	0	2	x	y

The CRC value is automatically calculated by the UNIGATE®

The UNIGATE® sends out the request (RX Poll Retry = 0) one time via the RS interface, and waits a maximum of 250 ms (Modbus Timeout = 25) on the response.

Fieldbus Map Adr = 0 -> not activ

Thereby the addressed slave holds the following data in its registers.:

register	
address	value(hex)
40000	0x0000
40001	0x0202
40002	0x0303
40003	0x0000
40004	0x0000

register = 1 Word = 2 Byte



In the documentation of some applications, an Offset + 1 at the address is assumed. The notation for address "40000" stands for "holding register". But in acutality address 0x0000 is meant by it. This is not uniform in the Modbus-Slave documentations. (E.g. the PC simulation tool "ModSim32" has this offset).

If a valid response is received, the four byte (No. Of Points = 2) process value (Modbus-Data) will be copied to the fieldbus from "Fieldbus Map Adr(Byte)" = 0 on.

Fieldbus data from UNIGATE® -> SPS:

51 13 02 02 03 03 30 04 01 00 01 00 00 00 02 57 00 01 03 00 00 00 00 00 00 00 ...

Byte 0 = Trigger-Byte „0x51“

Byte 1 = Fieldbus length byte „0x13“

Byte 2 = Process value (High) from StartAdr „0x02“

Byte 3 = Process value (Low) from StartAdr „0x02“

Byte 4 = Process value (High) from StartAdr + 1 „0x03“

Byte 5 = Prozess value (Low) from StartAdr + 1 „0x03“

### 8.8.3.4 Example: Read input registers FC4

(see chapter 8.8.3.3, Example: Read multiple register FC3)

### 8.8.3.5 Example: Force single coil FC5

At FC5 a bit is set in the Modbus slave, if the mapped fieldbus byte is bigger (>) than NULL.

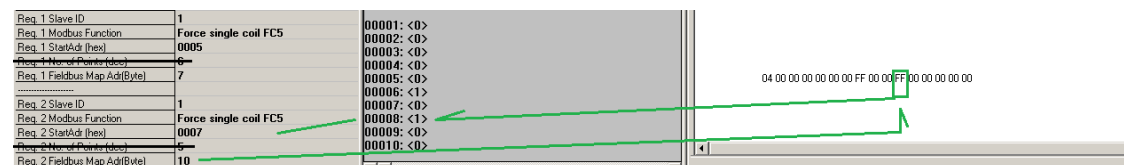
Configuration

Modbus Slave(impact)SPS sends  
Fieldbus data (reason)



**Note:** No. of Points is not required

Another example for when a second request is configured:



### 8.8.3.6 Example: Preset single register FC6

Configuration

Req. 1 Slave ID	1
Req. 1 Modbus Function	Preset single register FC6
Req. 1 StartAdr (hex)	0005
Req. 1 No. of Points (dec)	0
Req. 1 Fieldbus Map Adr(Byte)	7

SPS sends to UNIGATE®

01 00 00 00 00 00 00 00 FF23 00 FF 00 00 00 00 00 FF 00 00 00 00 00 00 00 00 00 00 00 00 00 00 00 ...

UNIGATE® sends Modbus RTU request

[01] [06] [00] [05] [ff] [23] [99] [e2]

Modbus Slave sends response

[01] [06] [00] [05] [ff] [23] [99] [e2]

Storage content of Modbus Slave after Response:

```

40001: <0000H>
40002: <0000H>
40003: <0000H>
40004: <0000H>
40005: <0000H>
40006: <FF23H>
40007: <0000H>
40008: <0000H>
40009: <0000H>
40010: <0000H>
    
```

### 8.8.3.7 Example: Force multiple coils FC15

Configuration

Req. 1 Slave ID	1
Req. 1 Modbus Function	Force multiple coils FC15
Req. 1 StartAdr (hex)	0002
Req. 1 No. of Points (dec)	10
Req. 1 Fieldbus Map Adr(Byte)	2

Fieldbus Master sends:

0E 00 FF 05 00...

UNIGATE® sends request:

[01] [0f] [00] [02] [00] [0a] [02] [ff] [05] [65] [29]

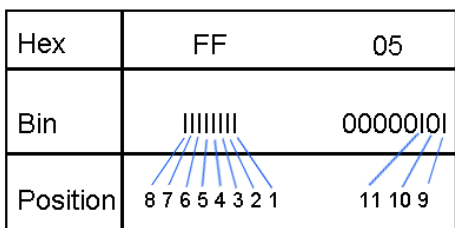
Modbus Slave sends response:

[01] [0f] [00] [02] [00] [0a] [74] [0c]

Storage content of Modbus Slave after response:

```

00001: <0>    00011: <1>
00002: <0>    00012: <0>
00003: <1>    00013: <0>
00004: <1>    00014: <0>
00005: <1>    00015: <0>
00006: <1>    00016: <0>
00007: <1>    00017: <0>
00008: <1>    00018: <0>
00009: <1>    00019: <0>
00010: <1>    00020: <0>
    
```



Please keep in mind that No. Of coils = 10, hence, only the lower bit in address 0011 is written at the value 0x05. Address 0013 would already be bit No. 11, which is not transmitted anymore.

### 8.8.3.8 Example: Preset multiple register FC16

Configuration

Req. 1 Slave ID	1
Req. 1 Modbus Function	Preset multiple register FC16
Req. 1 StartAdr (hex)	0002
Req. 1 No. of Points (dec)	10
Req. 1 Fieldbus Map Adr(Byte)	2

Fieldbus Master sends:

BA 00 01 02 03 04 05 06 07 08 09 0A 0B 0C 0D 0E 0F 10 11 12 13 14 15 16 ...

UNIGATE® sends Request:

[01] [10] [00] [02] [00] [0a] [14] [01] [02] [03] [04] [05] [06] [07] [08] [09] [0a] [0b] [0c] [0d] [0e] [0f]...  
 ... [10] [11] [12] [13] [14] [3d] [e4]

Modbus Slave sends Response:

[01] [10] [00] [02] [00] [0a] [e1] [ce]

Storage content Modbus Slave to Response:

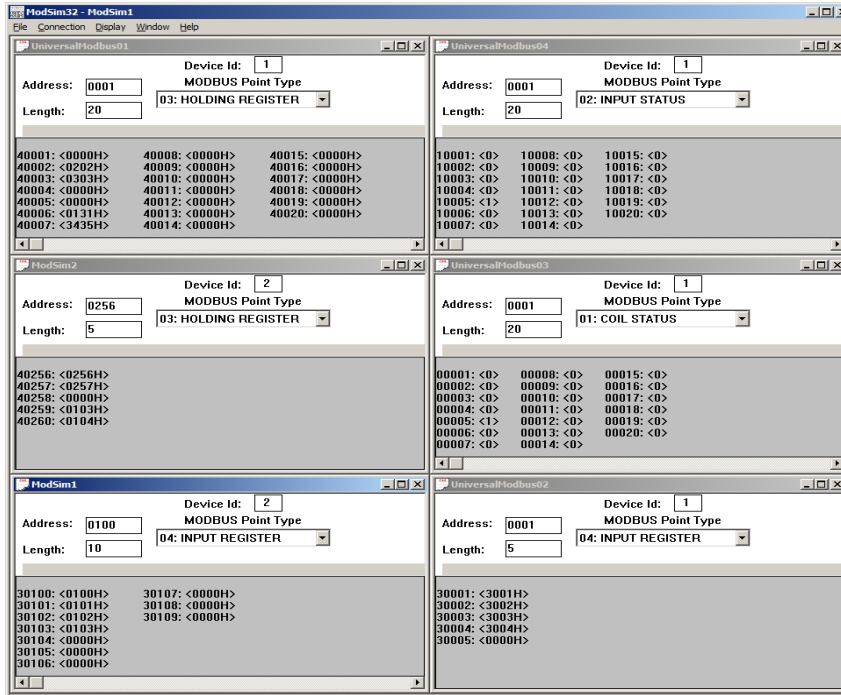
```

40001: <0000H>
40002: <0000H>
40003: <0102H>
40004: <0304H>
40005: <0506H>
40006: <0708H>
40007: <090AH>
40008: <0B0CH>
40009: <0D0EH>
40010: <0F10H>
40011: <1112H>
40012: <1314H>
40013: <0000H>
    
```



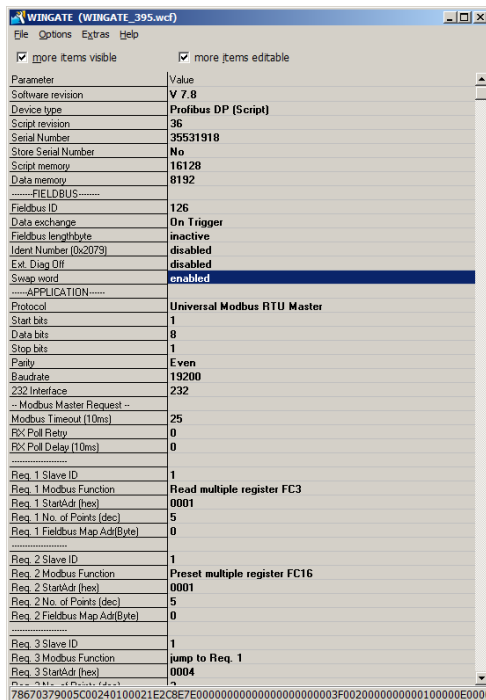


Modbus Slave storage content:



8.9.1.2 Swap Word

Configuration with „Swap Word“ = enabled. Fieldbus data is swapped to the Modbus slave. Meaning High Byte and Low Byte are switched.

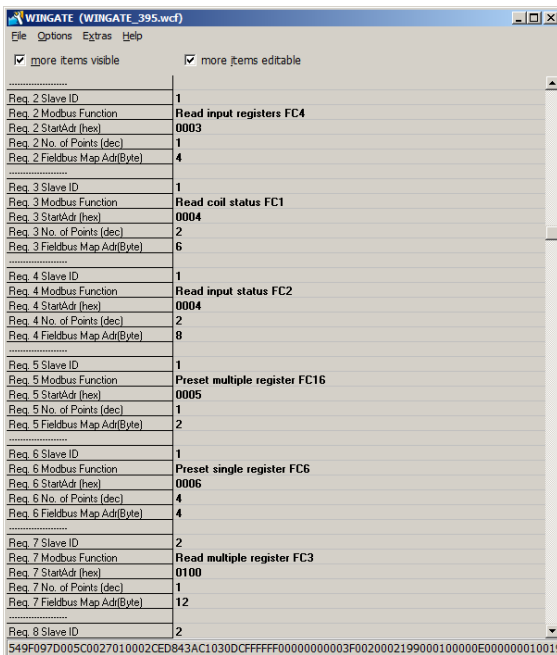
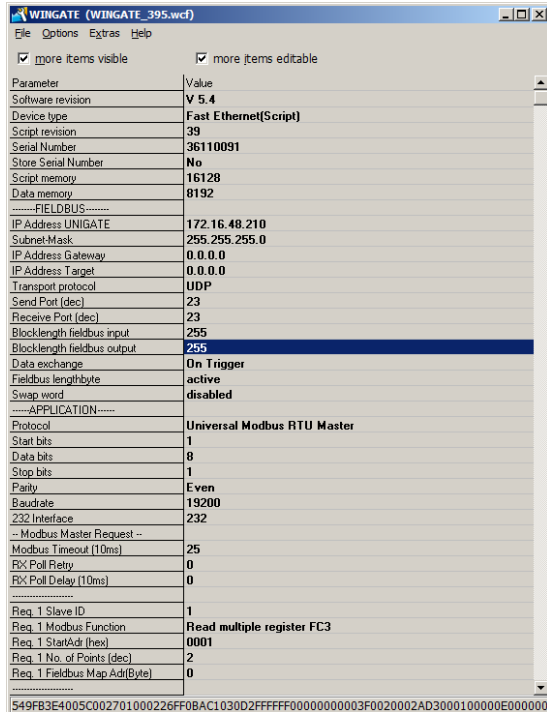


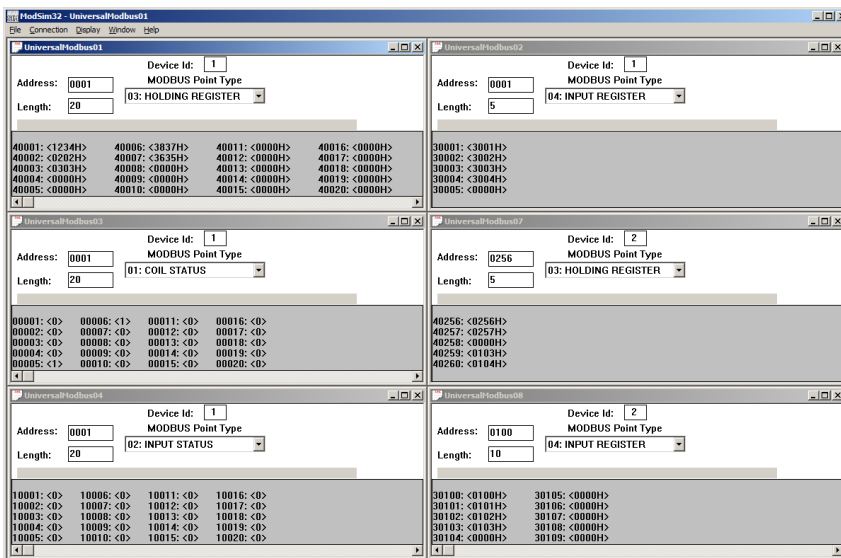
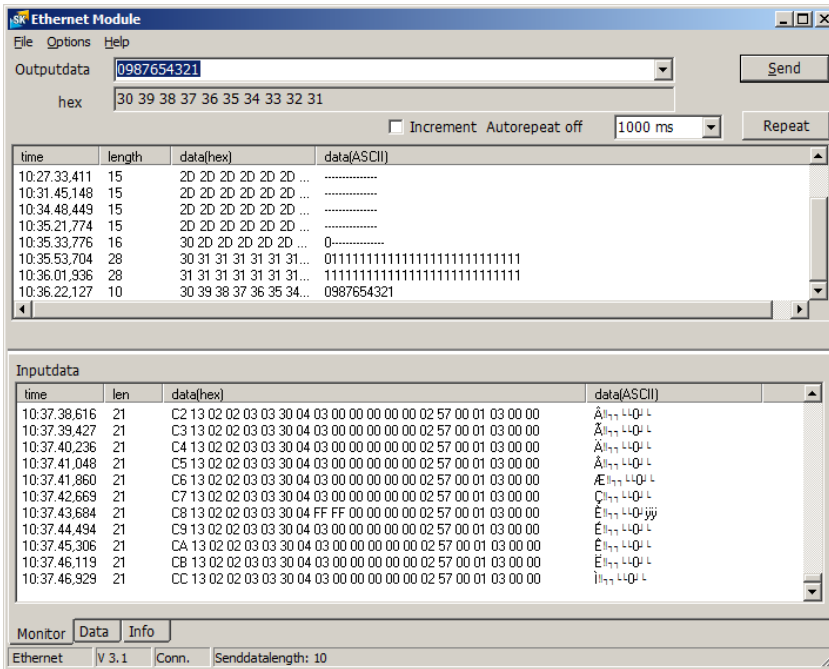
Fieldbus Master sends and receives.





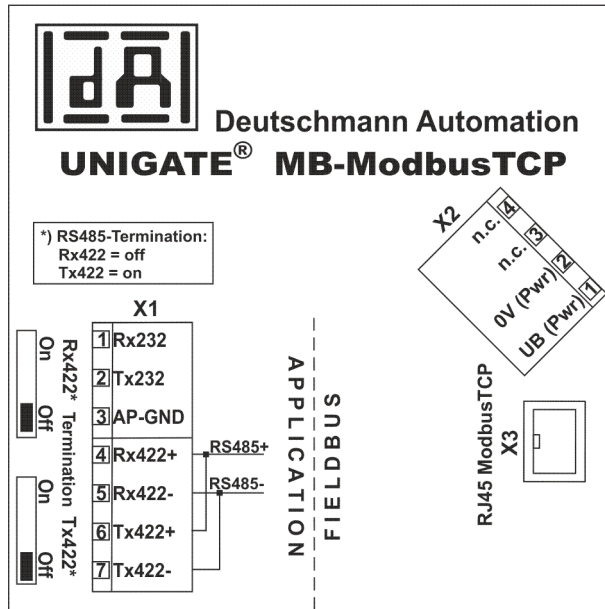
### 8.9.1.3 Example with Fast Ethernet





## 9 Hardware ports, switches and LEDs

### 9.1 Device labeling



Picture 1: Terminal labeling and termination



Bild 2: Front panel: Rotary switches and LEDs (from hard.-rev. B on)

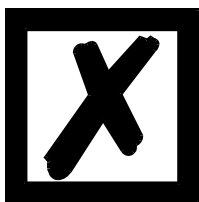
## 9.2 Connectors

### 9.2.1 Connector to the external device (RS-interface)

The serial interface is available at the plug accessible on the upper side of the device.

Pin assignment X1 (3-pin and 4-pin screw-type plug connector)

Pin No.	Name	Function
1	Rx 232	Receive signal
2	Tx 232	Transmit signal
3	AP-GND	Application Ground
4	Rx 422+ (485+)	Receive signal
5	Rx 422- (485-)	Receive signal
6	Tx 422+ (485+)	Transmit signal
7	Tx 422- (485-)	Transmit signal



For the operation at a 485-interface the two pins labeled "485-" have to be connected together.  
Also the two pins "485+".

### 9.2.2 Connector supply voltage

Pin assignment X2 (4-pin screw-plug connector, on the bottom side, at the back)

Pin No.	Name	Function
1	UB (Pwr)	10..33 V supply voltage / DC
2	0 V (Pwr)	0 V supply voltage / DC
3	n.c.	
4	n.c.	

### 9.2.3 Ethernet 10/100 BASE/T-connector

The plug (labeled: RJ45 Ethernet) for the connection to the Ethernet is available on the bottom side of the device.

Pin assignment X3 (RJ45)

Pin No.	Name	Function
1	TD+ (RD+*)	Transmission line+ (receive line+*)
2	TD- (RD-*)	Transmission line- (receive line-*)
3	RD+ (TD+*)	Receive line+ (transmission line+*)
4		
5		
6	RD- (TD-*)	Receive line- (transmission line-*)
7		
8		

\*) The device supports "autocrossover"

### 9.2.4 Power supply

The device must be powered with 10..33 VDC, The voltage supply is made through the 4-pin screw-plug connector at the device's bottom side.

Please note that the devices of the series UNIGATE® should not be operated with AC voltage.

## 9.3 LEDs

The Gateway UNIGATE® MB - Fast Ethernet features 11 LEDs with the following significance:

LED (Ethernet) Power	green	Supply voltage Ethernet
LED Full Duplex	green	Duplex transmission
LED 100 MB	green	100 MB-network
LED Link/Act.	green	Ethernet-link pulses found / network data traffic
LED (Ethernet) State	red/green	State of the interface Ethernet
LED Power	green	Supply voltage serial interface Ethernet
LED State	red/green	Interface condition serial interface
LEDs 1 / 2 / 4 / 8 (Error No. / Select ID)	green	Binary display of the Error number

#### 9.3.1 LED "(Ethernet) Power"

This LED is connected directly to the Ethernet supply voltage.

### 9.3.2 LED "Full Duplex"

This LED flashes when the data transmission is full duplex.

### 9.3.3 LED "100 MB"

This LED displays, that the data communication occurs on the Ethernet LAN with 100 Mbit.

### 9.3.4 LED "Link/Act."

This LED is directly controlled by the Ethernet controller and it shines if the Gateway is located in a working network (link pulses are being received) and it flickers when network data traffic takes place.

### 9.3.5 LED "(Ethernet) State"

Lights green	Connection established and active / a communication channel has been established in the Gateway (see chapter 12.5)
Flashes green	No communication established
Flashes green/red	Gateway is waiting for Ethernet initialization
Lights red	General network error

### 9.3.6 LED "Power"

This LED is connected directly to the supply voltage of the serial interface (RS232/422/485).

### 9.3.7 LED "State"

Lights green	Data exchange activ via serial interface
Flashes green	RS-interface OK, but no constant data exchange
Flashes green/red	No data exchange since switching on
Lights red	General Gateway error (see LEDs Error No.)
Flashes red	UNIGATE® is in the configuration / test mode

### 9.3.8 LEDs 1 / 2 / 4 / 8 (Error No. / Select ID)

If these 4 LEDs flash and LED "State" simultaneously lights red, the error number is displayed in binary notation (conversion table, see Annex) in accordance with the table in chapter "Error handling".

## 9.4 Switches

The Gateway features 4 (optionally 5) switches with the following functions:

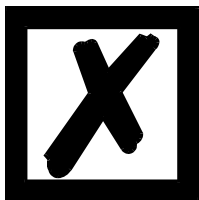
Termination Rx 422	switchable Rx 422-terminating resistor for the serial interface
Termination Tx 422	switchable Tx 422- or RS485-terminating resistor for the serial interface
Rotary coding switch S4	ID High for serial interface i. e. configmode
Rotary coding switch S5	ID Low for serial interface i. e. configmode
Rotary coding switch S6 (optional)	control mode-selection switch Ethernet controller

### 9.4.1 Termination Rx 422 + Tx 422 (serial interface)

If the Gateway is operated as the physically first or last device in an RS485-bus or as 422, there must be a bus termination at this Gateway. In order to do this the termination switch is set to position ON. The resistor (150 Ω) integrated in the Gateway is activated. In all other cases, the switch remains in position OFF.

Please refer to the general RS485 literature for further information on the subject of bus terminations.

If the integrated resistor is used, please allow for the fact that this also activates a pull-down resistor (390  $\Omega$ ) to ground and a pull-up resistor (390  $\Omega$ ) to VCC.



**At RS48 only the Tx 422-switch must be set to ON.**

**The Rx 422-switch has to be on OFF.**

#### 9.4.2 Rotary coding switches S4 + S5 (serial interface)

Via these two switches the RS485 -ID of the gateway is set to hexadecimal, as long as an ID is necessary for the bus. (A conversion table from decimal to hexadecimal can be found in the appendix.) This value is read in when the Gateway is switched on. The switch positions "EE" (testmode) and "FF" (config mode) are not possible for RS422- or RS485-operation.

**Note:** The switch position "DD" (ie, S4 and S5 in position "D") is reserved for internal purposes.

#### 9.4.3 Rotary coding switch S6 (optional)

The function of the rotary coding switch S6 is, to set different control modes at the Ethernet controller.

Switch position S6	Meaning		
0 (or 8)	Autonegotiate enabled	Speed 10/100	Duplex full/half
1 (or 9)	Autonegotiate enabled	Speed 10	Duplex full/half
2 (or 10)	Autonegotiate enabled	Speed 10/100	Duplex half
3 (or 11)	Autonegotiate enabled	Speed 10	Duplex half
4 (or 12)	Autonegotiate disabled	Speed 100	Duplex full
5 (or 13)	Autonegotiate disabled	Speed 10	Duplex full
6 (or 14)	Autonegotiate disabled	Speed 100	Duplex half
7 (or 15)	Autonegotiate disabled	Speed 10	Duplex half

## 10 Error handling

### 10.1 Error handling at UNIGATE® MB

If the Gateway detects an error, the error is signalled by the "State" LED lighting red and, simultaneously, the error number being indicated by means of LEDs "Error No." as shown in the table below (Flashing frequency 1 Hertz). A distinction can be made between two error categories:  
 Serious errors (1-5): In this case, the Gateway must be switched off and switched back on again. If the error occurs again, the Gateway must be exchanged and returned for repair.  
 Warnings (6-15): These warnings are displayed for one minute simply for information purposes and are then automatically reset. If such warnings occur frequently, please inform After-Sales Service.

In the configuration mode these displays are not valid and only meant for internal use.

LED8	LED4	LED2	LED1	Error no. resp. ID	Error description
0	0	0	0	0	Reserved
0	0	0	1	1	Hardware fault
0	0	1	0	2	EEROM error
0	0	1	1	3	Internal memory error
0	1	0	0	4	Fieldbus hardware error
0	1	0	1	5	Script error
0	1	1	0	6	Reserved
0	1	1	1	7	RS-transmit buffer overflow
1	0	0	0	8	RS-receive buffer overflow
1	0	0	1	9	RS timeout
1	0	1	0	10	General fieldbus error
1	0	1	1	11	Parity-or frame-check-error
1	1	0	0	12	Reserved
1	1	0	1	13	Fieldbus configuration error
1	1	1	0	14	Fieldbus data buffer overflow
1	1	1	1	15	Reserved

Table 1: Error handling at UNIGATE® MB - system errors.



LED8	LED4	LED2	LED1	Error-No.	Protocol	Error description
0	0	1	1	3	all Protocols	No Universal script support
0	1	0	1	5	all Protocols	Unknown Protocols
1	0	0	1	9	Modbus RTU Master Modbus ASCII Master	Timeout-Modbus Slave Participant didn't response in set time frame (response time).
					Modbus RTU Slave Universal Modbus RTU Slave	Timeout at Response-transmission
					3964(R)	Timeout - no response from Participant
1	0	1	1	11	Universal 232 (with 232 Checksum)	Checksum of reception does not match the calculated one.
					Modbus RTU Slave Universal Modbus RTU Slave	Unknown error after response transmission.
					3964(R)	Error at data exchange (e.g. Checksum error)
1	1	0	0	12	Universal Modbus RTU Master	Error in Response of Function-code
1	1	0	0	12	SSI	Error at the SSI communication
1	1	1	1	15	Modbus RTU Master Modbus ASCII Master	General reception error at Modbus (ASCII) Exchange, e.g. Checksum error
1	1	1	0	14*	Modbus RTU Slave	Exception Response
1	1	1	1	15*	all Protocols	internal error at process data measurement

Table 2: Protocol based errors

\*Flashing frequency = 0,5 Hertz

## 11 Installation guidelines

### 11.1 Installation of the module

The module with the dimensions 23 x 115 x 111 mm (W x D x H) has been developed for switch cabinet use (IP 20) and can thus be mounted only on a standard mounting channel (deep DIN-rail to EN 50022).

#### 11.1.1 Mounting

- Engage the module from the top in the top-hat rail and swivel it down so that the module engages in position.
- Other modules may be rowed up to the left and right of the module.
- There must be at least 5 cm clearance for heat dissipation above and below the module.
- The standard mounting channel must be connected to the equipotential bonding strip of the switch cabinet. The connection wire must feature a cross-section of at least 10 mm<sup>2</sup>.

#### 11.1.2 Removal

- First disconnect the power supply and signal lines.
- Then push the module up and swivel it out of the top-hat rail.

Vertical installation

The standard mounting channel may also be mounted vertically so that the module is mounted turned through 90°.

### 11.2 Wiring

#### 11.2.1 Connection systems

The following connection systems must resp. may be used when wiring the module:

- Standard screw-type/plug connection (power supply + RS)
- 8-pin RJ45-plug-in connection (Ethernet-connection)

a) In the case of standard screw-type terminals, one lead can be clamped per connection point. It is best to then use a screwdriver with a blade width of 3.5 mm to firmly tighten the screw.

Permitted cross-sections of the line:

- Flexible line with wire-end ferrule: 1 x 0.25 ... 1.5 mm<sup>2</sup>
- Solid conductor: 1 x 0.25 ... 1.5 mm<sup>2</sup>
- Tightening torque: 0.5 ... 0.8 Nm

b) The plug-in connection terminal strip is a combination of standard screw-type terminal and plug connector. The plug connection section is coded and can thus not be plugged on the wrong way round.

##### 11.2.1.1 Power supply

The device must be powered with 10..33 V DC.

- Connect the supply voltage to the 4-pole plug-in screw terminal in accordance with the labelling on the device.

##### 11.2.1.2 Equipotential bonding connection

The connection to the potential equalization automatically takes place it is put on the DIN-rail.

### 11.2.2 Ethernet communication interface

This interface is located on the module in the form of a 8-pin RJ45 socket on the bottom side of the housing.

- Plug the Ethernet-connector into the RJ45 socket labeled "RJ45 Ethernet" until it snaps in.
- Please make sure that the length of the line to the adjacent Ethernet participants does not fall below 0.6 m.

### 11.2.3 Line routing, shield and measures to combat interference voltage

This chapter deals with line routing in the case of bus, signal and power supply lines, with the aim of ensuring an EMC-compliant design of your system.

### 11.2.4 General information on line routing

- Inside and outside of cabinets

In order to achieve EMC-compliant routing of the lines, it is advisable to split the lines into the following line groups and to lay these groups separately.

- ⇒ Group A:
  - shielded bus and data lines (e. g. for RS232C and printers etc.)
  - shielded analogue lines
  - unshielded lines for DC voltages  $\geq 60$  V
  - unshielded lines for AC voltage  $\geq 25$  V
  - coaxial lines for monitors
- ⇒ Group B:
  - unshielded lines for DC voltages  $\geq 60$  V and  $\geq 400$  V
  - unshielded lines for AC voltage  $\geq 24$  V and  $\geq 400$  V
- ⇒ Group C:
  - unshielded lines for DC voltages  $> 400$  V

The table below allows you to read off the conditions for laying the line groups on the basis of the combination of the individual groups.

	Group A	Group B	Group C
Group A	1	2	3
Group B	2	1	3
Group C	3	3	1

Table 3: Line laying instructions as a function of the combination of line groups

- 1) Lines may be laid in common bunches or cable ducts.
- 2) Lines must be laid in separate bunches or cable ducts (without minimum clearance).
- 3) Lines must be laid in separate bunches or cable ducts inside cabinets but on separate cable racks with at least 10 cm clearance outside of cabinets but inside buildings.

#### 11.2.4.1 Shielding of lines

Shielding is intended to weaken (attenuate) magnetic, electrical or electromagnetic interference fields.

Interference currents on cable shields are discharged to earth via the shielding bus which is connected conductively to the chassis or housing. A low-impedance connection to the PE wire is particularly important in order to prevent these interference currents themselves becoming an interference source.

Wherever possible, use only lines with braided shield. The coverage density of the shield should exceed 80%. Avoid lines with foil shield since the foil can be damaged very easily as the result of tensile and compressive stress on attachment. The consequence is a reduction in the shielding effect.

In general, you should always connect the shields of cables at both ends. The only way of achieving good interference suppression in the higher frequency band is by connecting the shields at both ends.

The shield may also be connected at one end only in exceptional cases. However, this then achieves only an attenuation of the lower frequencies. Connecting the shield at one end may be more favorable if

- it is not possible to lay an equipotential bonding line
- analogue signals (a few mV resp. mA) are to be transmitted
- foil shields (static shields) are used.

In the case of data lines for serial couplings, always use metallic or metallized plugs and connectors. Attach the shield of the data line to the plug or connector housing.

If there are potential differences between the earthing points, a compensating current may flow via the shield connected at both ends. In this case, you should lay an additional equipotential bonding line.

Please note the following points when shielding:

- Use metal cable clips to secure the shield braiding. The clips must surround the shield over a large area and must have good contact.
- Downstream of the entry point of the line into the cabinet, connect the shield to a shielding bus. Continue the shield as far as the module, but do not connect it again at this point!

## 12 Ethernet

Each Ethernet-Client processor with TCP/IP network-protocol in a 10/100 Mbaud Ethernet can exchange data with the Gateway.

### 12.1 Network-addresses, network-connections

After switching on, the Gateway is waiting for data communication with a network-participant. In this case the Gateway is always prepared to react to ICMP messages (e. g. **PING** Request and Reply). The functions of the ARP-protocol are also available.

### 12.2 TCP-connection setup

In the characteristic application in the TCP/IP-protocol, after switching on, the Gateway is in the state "Passive Open" under an IP-address and port number that was determined in the configuration. A Client processor is in the position to open a TCP/IP connection with the Gateway under the port determined in the configuration. After a successful connecting, data can be exchanged.

### 12.3 Data exchange

At the protocol TCP/IP, a full duplex data connection is available after establishing a connection between the Gateway and the attached Ethernet-Client. The data stream is protected by the TCP/IP-protocol in both directions.

When operating with UDP/IP-protocol, no connection is established before data is transferred. In this case the application is responsible for the control of the data flow as well as for the backup of the data.

#### 12.3.1 TCP or UDP?

TCP is a connection-oriented protocol: Here a fixed logical connection between Client and Server exists in the course of the data communication. TCP features all mechanisms, that are required, in order to open a connection and to guarantee a flawless data transfer across the network and then again close the connection. For that reason the protocol software creates and administers own buffers for each connection. In case a lot of UNIGATE<sup>®</sup>-servers are to be addressed from one processor at the same time, storage limits in the processor might result in an extreme case.

In contrast to TCP, UDP does not have mechanisms available to repeat data packets or to check them on their completeness. The data communication with UDP is to be recommended if a parent protocol guarantees a flawless transmission between the terminal device at the UNIGATE<sup>®</sup>-server and the application on the TCP/IP-station anyhow.

### 12.4 Data exchange mode

The Gateway has to be in the data exchange mode, so that a data exchange between the RS-side of the Gateway and the fieldbus is possible. As long as the Gateway is not in the configuration mode or the test mode, the data exchange mode is active. In the data exchange mode the Gateway will carry out the Script with those parameters preset through WINGATE and in the Script.

There are 4 communication channels.

For the channels the following adjustments in the Script in each case have to be made:

- \* The port numbers (Destination-Port and Source-Port)
- \* At client operation TCP or at UDP the destination-IP-address
- \* The mode or the protocol of the channel:
  - 0 = TCP-server,
  - 1 = TCP-client,
  - 2 = UDP,
  - 3 = Channel not used (closed)
  - 4 = RAW\_MODE

Without these settings a connection to the Gateway cannot be set up via the Ethernet. Only ICMP-data traffic (PING) is possible.

### 12.4.1 Direct data exchange

In the Ethernet the data from the RS-interface are represented unchanged via a TCP/IP connection.

### 12.4.2 MODBUS-TCP

The Modbus protocol is already available as Script for the serial interface for all Script gateways. Now this additional function can be adjusted at the Fast Ethernet Gateway so that the Modbus data can be made available as TCP-Modbus data packet on the Ethernet side. (MODBUS-TCP).

For this purpose the channel that is used for this feature has to be set up as MODBUS-TCP channel in the Script.

For this function a running Modbus-Script is required.

### 12.4.3 E-mail

On occurrence of particular events it is possible to send an e-mail to certain subscribers of a mailserver. (The event is to be queried from the Script.) In the data that are received by the serial interface or that are to be output at the serial interface certain characters or character strings can be analyzed. On appearance of a particular sequence an e-mail that was prepared before and that was written in the Script can be sent to one or several subscribers. For this purpose the e-mail is sent to an E-mail-server.

This e-mail function is called up from the Script.

### 12.4.4 Server

#### 12.4.4.1 Webserver

Websites can be called up through a communication channel that has been set up as webserver channel via a Script. Here the internal data system is used. Several websites can be placed or rather websites, image files and Java-applets can be called up. This way it is also possible to represent the dynamically changing data of an application, that is connected to the serial interface (shift register). Apart from that it is possible to remote-control an application with control elements on the website or to transmit data to this application.

#### 12.4.4.2 FTP-server

For this function of the FTP-server 2 of the 4 available communication channels have to be set up. One of the channels is in charge of the control, the other channel is responsible for the data transmission. Once that the set up of the channels has been carried out initially in the Script, it is possible on the Ethernet side to store files in the internal file system, to load files, to delete files etc...with a FTP-client-program.

**Available functions:**

PUT = Create and write file  
GET = Read file  
DIR = Read directory  
DEL = Delete file  
DEL \*.\* = Deleting all files and initializing (mapping) the file system.  
CD = Change directory

2 subdirectories are firmly established ("flash" and "ramdisk").

The user is not in the position to establish further subdirectories.

Files can be established in the subdirectories "flash" and "ramdisk" only.

In the subdirectory "ramdisk" files can only be created if a memory area was set up in the Script before.

(see `example_FileAccess.dss`)

Files can be established, described or read by the FTP-server or the Script.

(see `example_FileAccess.dss`)

The FTP server is automatically available in the config-mode.

In the regular operating mode two channels FTP-control and FTP-data are to be established for the FTP-server.

The FTP-server works independently of the Script

**12.4.4.3 Script update via FTP**

The dcs-file generated by the

Protocol Developer has to be stored as "script.dcs" by the FTP on the Gateway (subdirectory "flash"). When the Gateway starts up, it identifies and transfers the file and then it deletes the file "script.dcs".

**12.4.4.4 System configuration update via FTP**

A WINGATE gwc-file has to be stored on the Gateway (subdirectory "flash") as "system.gwc" via FTP. When the Gateway is started, it identifies this file, transfers the new configuration and then deletes the file "system.gwc".

**12.4.4.5 File system**

A file system is available. The Gateway is equipped with an additional memory module that can store data of the file system permanently. It is possible to store up to 128 files in the file system. The file names may exist of up to 24 characters. At present the maximum memory capacity is 1 Mbyte. On request up to 8 MByte can be assembled.

**12.5 UNIGATE®-SCAN-function**

The Gateway has the support of the UNIGATE-SCAN-tool integrated. Which means that by default a channel is established in the Fast Ethernet that processes these scan requests. Thus, a channel is already active immediately after switching on. It is displayed via the bus status "connection established and active" (i.e. bus state LED lights up green).

UNIGATEscan.exe is a program with which you can find and configure Deutschmann CL-Fast Ethernet and IC-Fast Ethernet UNIGATE® devices in a network.

There to the devices have to be turned on in the configuration mode and have to be connected to the Ethernet.

The program is started. After initialization, the program displays a selection box with the name "Adapter IP", that shows the Ethernet network adapter, located on the computer, with the base addresses of the respective network.

For the scan mode you first select the desired adapter. Subsequently a search process is initiated by pressing the scan button. The big window of the UNIGATE®-Scan displays the UNIGATE® devices found in the network with MAC address, IP address, type and software revision.

From the list of displayed UNIGATE® devices you now select the device that, for example, should be configured with a new IP address. With the flash function you can make sure whether you have selected the desired UNIGATE®. After pressing the flash button the bus state LED on the selected UNIGATE® device flashes red for 5 seconds.

Via the Set-IP-button, and if the correct UNIGATE® device is selected, you can configure the device with the address shown in the "IP-address" window.

If you want to permanently save the address in the UNIGATE® you have to check the field "set\_perm".

After turning the UNIGATE® off and then back on, you can check if the new address has been transferred correctly with another scan.



## 13 Technical data

### 13.1 Device data

The technical data of the module is given in the table below.

No.	Parameter	Data	Explanations
1	Location	Switch cabinet	DIN-rail mounting
2	Enclosure	IP20	Protection against foreign bodies and water to IEC 529 (DIN 40050)
4	Service life	10 years	
5	Housing size	23 x 115 x 111 mm (screw-plug-connector included) 23 x 100 x 115 mm (screw-plug connector not included)	W x D x H
6	Installation position	Any	
7	Weight	Approx. 140 g	
8	Operating temperature	-25°C ... +85°C	
9	Storage/transport temperature	-40 °C ... +85 °C	
10	Atmospheric pressure during operation during transport	795 hPa ... 1080 hPa 660 hPa ... 1080 hPa	
11	Installation altitude	2000 m 4000 m	Unrestricted Restricted - Ambient temperature ≤ 40°C
12	Relative humidity	Max. 80 %	No condensation, no corrosive atmosphere
14	External power supply	10..33 V DC	Standard power supply unit to DIN 19240
15	Current consumption at 24 VDC	Typ. 120 mA max 150 mA	
17	Reverse voltage protection	Yes	But does not function!
18	Short-circuit protection	Yes	
19	Overload protection	Poly-switch	Thermal fuse
20	Undervoltage detection (USP)	≤ 9 V DC	
21	Emergency power supply	≥ 5 ms	Device fully operable

Table: Technical data of the module

### 13.1.1 Interface data

The table below lists the technical data of the interfaces and ports on the device. The data has been taken from the corresponding Standards.

No.	Interface designation Physical interface	Ethernet Ethernet 10/100 BaseT	RS232-C RS232-C	RS485/RS422 RS485/RS422
1	Standard		DIN 66020	EIA Standard
2	Transmission mode	Symmetrical asynchronous serial full-duplex half-duplex  → Difference signal	Asymmetrical asynchronous serial full-duplex  → Level	Symmetrical asynchronous serial half-duplex full-duplex at RS422  → Difference signal
3	Transmission method	Multimaster CSMA/CD	Master / slave	Master / slave
4	Number of users : - Transmitters - Empfänger	512 512	1 1	32 32
5	Cable length: - Maximum  - Depending on baud rate	100 m	15 m  no	1200 m  <93.75 kBd→1200 m 312, kBd→500 m 625 kBd→250 m
6	Bus topology	Star	Point-to-point	Line
7	Data rate: - Maximum - Standard	100 Mbit/s 10 Mbit/s 100 Mbit/s (autodetect)	120 kBit/s 2.4 k/B 4.8 k/B 9.6 kBit/s 19.2 kBit/s 38.4 kBit/s	625 kBaud 2.4 kBit/s 4.8 kBit/s 9.6 kBit/s 19.2 kBit/s 57.6 kB 312.5 kB 625 kB
8	Transmitter: - Load - Maximum voltage - Signal, unloaded - Signal, loaded	100 Ω	3 ... 7 kΩ ± 25 V ± 15 V ± 5 V	54 Ω - 7 V ... 12 V ± 5 V ± 1.5 V
9	Receiver: - Input resistance - Maximum input signal - Sensitivity	100 Ω	3 ... 7 Ω ± 15 V ± 3 V	12 Ω - 7 V ... 12 V ± 0.2 V
10	Transmit range (SPACE): - Voltage level - Logic level		+ 3 ... + 15 V 0	- 0.2 ... + 0.2 V 0
11	Transmit pause (MARK): - Voltage level - Logic level		- 3 ... -15 V 1	+ 1.5 ... +5 V 1

Table: Technical data of the interfaces at the module

## 14 Commissioning guide

### 14.1 Note

Only trained personnel following the safety regulations may commission the UNIGATE®.

### 14.2 Components

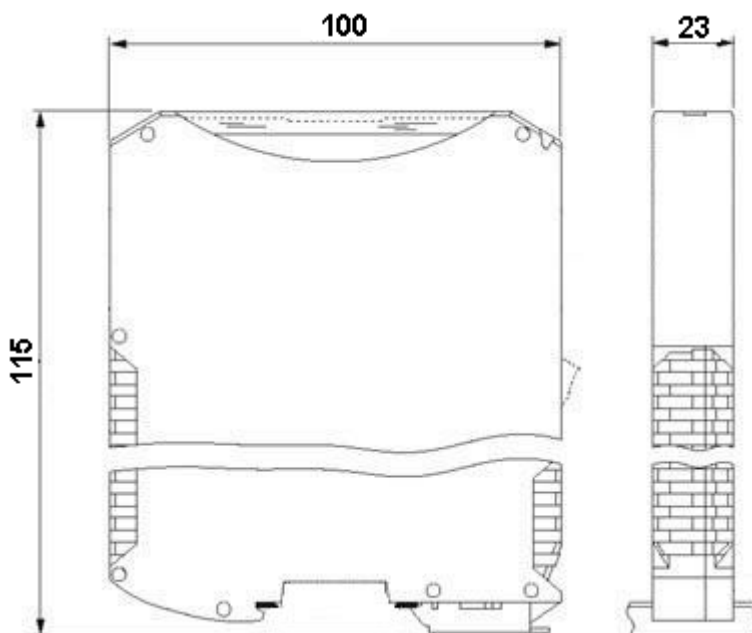
You will require the following components to commission the UNIGATE®:

- UNIGATE®
- Connection cable from Gateway to the process
- Connector for Ethernet connection to the Gateway
- Ethernet cable (this cable is generally available on site!)
- 10..33 V DC power supply (DIN 19240)
- User manual (the instruction manual can be ordered separately or downloaded free of charge from our homepage at [www.deutschmann.de](http://www.deutschmann.de)).

### 14.3 Installation

The UNIGATE® CL - FE module features protection type IP20 and is thus suitable for switch cabinet use. The device is designed for snapping onto a 35 mm DIN-rail.

### 14.4 Dimensional drawing UNIGATE® MB - Fast Ethernet



### 14.5 Commissioning

It is essential that you perform the following steps during commissioning in order to ensure that the module operates correctly:

### 14.6 Ethernet connection

Connect the device to the Ethernet network at the interface labeled "RJ45 Ethernet".

### **14.7 Connection to the process device**

Please also read the manual for the process device when commissioning the process device.

### **14.8 Shield connection**

Earth the top-hat rail onto which the module has been snapped.

### **14.9 Connecting the supply voltage**

Please connect 10..33 DC voltage to the terminals provided for this.

## 15 Servicing

Should questions arise that are not covered in this manual you can find further information in our

- FAQ/Wiki area on our homepage [www.deutschmann.com](http://www.deutschmann.com) or directly in our Wiki on [www.wiki.deutschmann.de](http://www.wiki.deutschmann.de)

If your questions are still unanswered please contact us directly.

**Please note down the following information before calling:**

- Device designation
- Serial number (S/N)
- Article number
- Error number and error description

Your request will be recorded in the Support center and will be processed by our Support Team as quickly as possible (Usually in 1 working day, rarely more than 3 working days.).

Technical Support hours are as follows:

Monday to Thursday from 8 am to midday and from 1 pm to 4 pm, Friday from 8 am to midday (CET).

Deutschmann Automation GmbH & Co. KG  
Carl-Zeiss-Straße 8  
D-65520 Bad-Camberg  
Germany

Central office and sales department +49 6434 9433-0  
Technical Support +49 6434 9433-33

Fax sales department +49 6434 9433-40  
Fax Technical Support +49 6434 9433-44

E-mail Technical Support [support@deutschmann.de](mailto:support@deutschmann.de)

### 15.1 Returning a device

If you return a device, we require as comprehensive a fault/error description as possible. We require the following information in particular:

- What error number was displayed?
- What is the supply voltage ( $\pm 0.5$  V) with Gateway connected?
- What were you last doing or what last happened on the device (programming, error on power-up, ...)?

The more precise information a fault/error description you provide, the more exactly we will be able to pinpoint the possible causes.

### 15.2 Downloading PC software

You can download current information and software free of charge from our Internet server. <http://www.deutschmann.com>.

## 16 Annex

### 16.1 Explanations of the abbreviations

#### General

CL	=	Product group CL (Compact Line)
CM	=	Product group CM (CANopen Line)
CX	=	Product group CX
EL	=	Product group EL (Ethernet Line)
FC	=	Product group FC (Fast Connect)
GT	=	Galvanic separation RS-side
GY	=	Housing color gray
MB	=	Product group MB
RS	=	Product group RS
SC	=	Product group SC (Script)
232/485	=	Interface RS232 and RS485 switchable
232/422	=	Interface RS232 and RS422 switchable
DB	=	Additional RS232 DEBUG-interface
D9	=	Connection of the RS through 9-pin D-SUB instead of 5-pin screw-plug connector
PL	=	Board only without DIN-rail module and without housing cover
PD	=	Board only without DIN-rail module and with housing cover
AG	=	Gateway installed in a die-cast aluminum housing
EG	=	Gateway installed in a stainless steel housing
IC	=	Product group IC (IC-design DIL32)
IO8	=	Option I/O8
16	=	Script memory expanded to 16KB
5V	=	Operating voltage 5V
3,.3V	=	Operating voltage 3.3V

#### Fieldbus

ASI	=	AS-Interface (AS-i)
BI	=	BACnet/IP
BMS	=	BACnet MSTB
CO	=	CANopen
C4	=	CANopen V4
C4X	=	CANopen V4-version X (see comparison table UNIGATE® IC for the respective product)
DN	=	DeviceNet
EC	=	EtherCAT
EI	=	Ethernet/IP
FE	=	Ethernet 10/100 MBit
FEX	=	Ethernet 10/100 MBit-version X (see comparison table UNIGATE® IC for the respective product)
IB	=	Interbus
IBL	=	Interbus
LN62	=	LONWorks62
LN512	=	LONWorks512
ModTCP	=	ModbusTCP
MPI	=	Siemens MPI®
PL	=	Powerlink

PN = Profinet-IO  
PBDP = ProfibusDP  
PBDPL = ProfibusDP-version L (see comparison table UNIGATE® IC for the respective product)  
PBDPX = ProfibusDP-version X (see comparison table UNIGATE® IC for the respective product)  
PBDPV0 = ProfibusDPV0  
PBDPV1 = ProfibusDPV1  
RS = Serial RS232/485/422

## 16.2 Hexadecimal table

Hex	Decimal	Binary
0	0	0000
1	1	0001
2	2	0010
3	3	0011
4	4	0100
5	5	0101
6	6	0110
7	7	0111
8	8	1000
9	9	1001
A	10	1010
B	11	1011
C	12	1100
D	13	1101
E	14	1110
F	15	1111

